

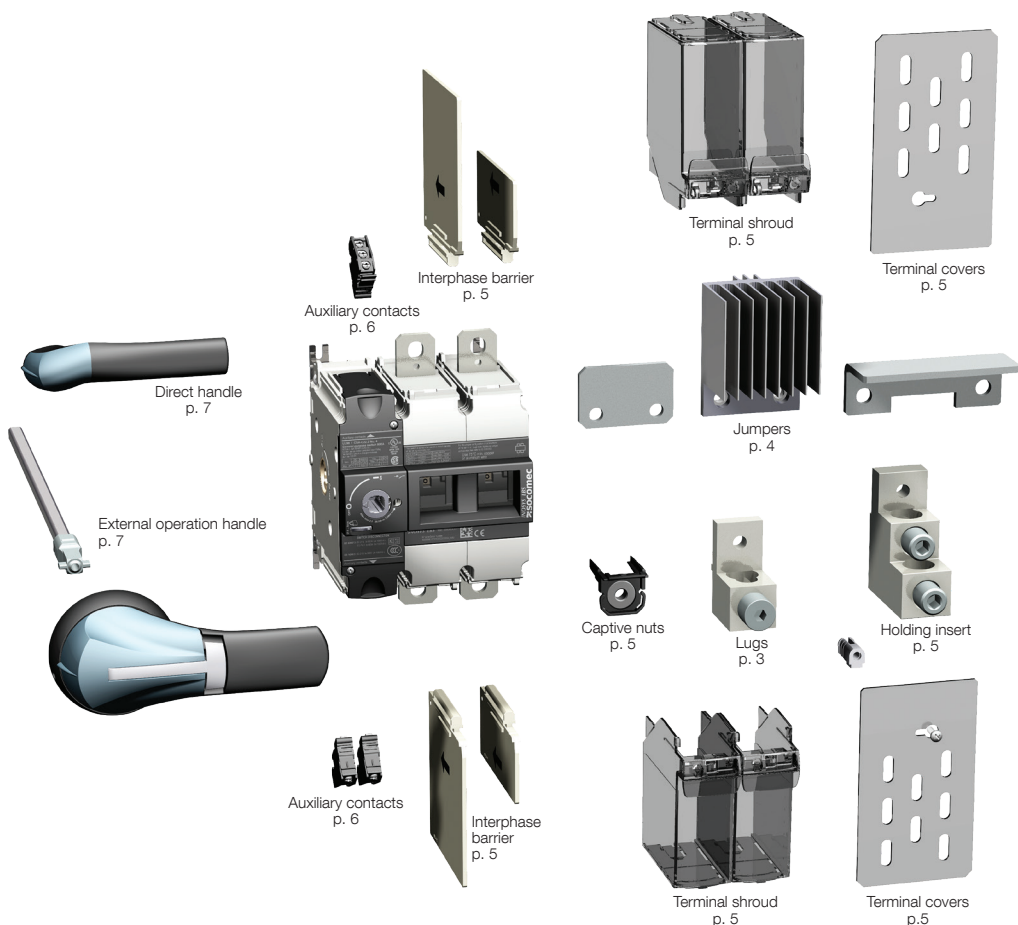
INOSYS LBS

PV / DC switches – 100 to 630 A
IEC: 86Pxxxx / IEC & UL: 87Pxxxx



1	IEC	160 A / 250 A / 315 A				
	UL	100 A / 200 A / 250 A				
2	IEC	400 A / 630 A				
	UL	275 A / 325 A / 400 A / 500 A				

Switch and accessories
L'interrupteur et ses accessoires
El interruptor y sus accesorios



Keep the instruction sheet, it is necessary for the mounting of the accessories. Non contractual document.
Ne jetez pas cette notice : elle sera nécessaire pour le montage des accessoires. Document non contractuel.
No tirar este manual, porque es necesario para el montaje de los accesorios. Documento no contractual.

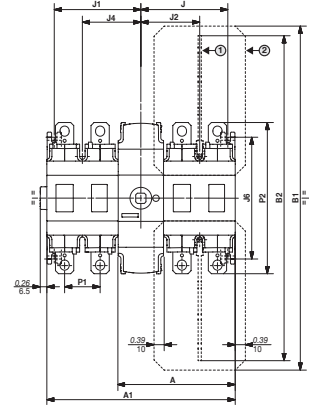
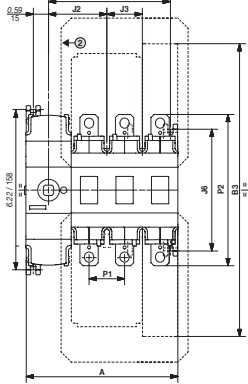
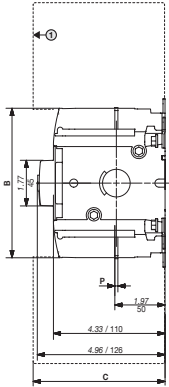
Dual dimensions
Double dimensions
Dimensiones duales

in/mm
in/mm
in/mm

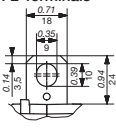
- ① Interphase barrier
Ecrans entre phase
Pantalla de separación entre pletinas
- ② Terminal screens
Ecran de protection de plages
Pantallas de protección
- ③ Terminal shroud
Caches bornes
Cubrebornes

	A	A1	J	J1	J	J	
	2P	3P	1+1P/2+2P	1+1P/2+2P	1+1P/2+2P	2P	3P
①	in 4.60	5.98	4.60/7.36	1.97/3.37	2.05/3.44	3.35	4.72
	mm 117	152	117/187	50.5/85.5	52.5/87.5	85.5	120.5
②	in 5.40	7.17	5.40/8.94	2.36/4.15	2.44/4.23	4.13	-
	mm 137	182	137/227	60.5/105.5	62.5/107.5	105.5	-

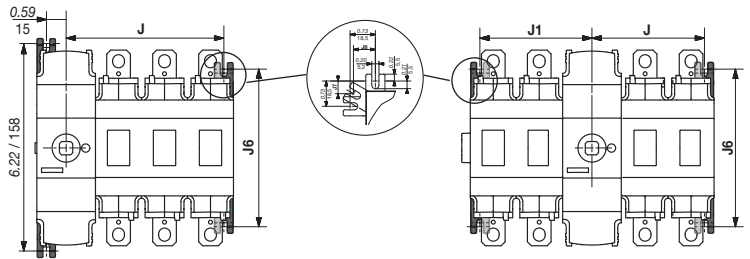
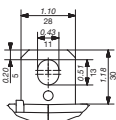
	B	B1	B2		B3		C		J2	J3	J4	J6	P1	P2
			IEC short	IEC long	UL	IEC	UL							
①	in 5.90	13.35	7.85	12.61	10.31	11.64	4.33	4.33	2.26	1.38	2.34	4.72	1.38	5.87
	mm 154	339	199	320	262	296	110	110	57.5	35	59.5	120	35	149
②	in 5.90	16.28	9.35	14.11	15.5	14.12	4.33	5.31	2.64	1.77	2.72	6.22	1.77	7.87
	mm 154	414	237	358	394	359	110	135	67.5	45	69.5	158	45	200



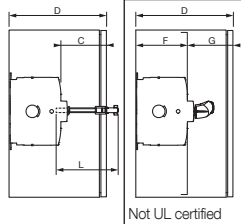
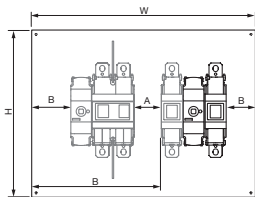
① F2 Terminals



② F3 Terminals



Minimum enclosure dimensions UL98B, IEC / Dimensions minimum des coffrets UL98B, IEC / Dimensiones mínimas de las cajas UL98B, IEC



Minimum UL enclosure size	H (in/mm)	W (in/mm)	D (in/mm)
①	1P 24/609	16/406	6/152
	2P 24/609	16/406	6/152
	3P 24/609	16/406	6/152
②	1P 36/914 (40/1016 for 275A)	24/609	8/203
	2P 36/914	24/609	8/203
	3P 36/914	24/609	8/203
	4P (48/1219 for 500A)	(36/914 for 500A)	(12/304 for 500A)

Clearance	①		②	
	in	mm	in	mm
A min.	3.00	76.2	3.00	76.2
B min.	1.50	38.1	1.50	38.1
C min.	0.87	22	1.08	27.5
F min.	4.33	110	5.41	137.5
G min.	0	0	0.5	12.7

External enclosure dimension.
Dimension extérieure du coffret.
Dimensiones externas de la caja.

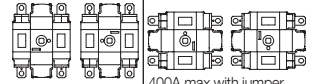
Mounting / Montage / Montaje



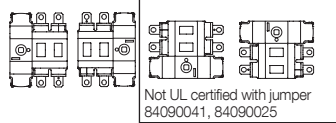
PZ 2
22.12 lb.in / 2,5 Nm

Mounting orientation / Sens de montage / Sentido de montaje

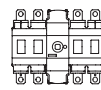
All mounting orientations are possible.
Derating may apply - please consult us.



400A max with jumper
84090039



Not UL certified with jumper
84090041, 84090025

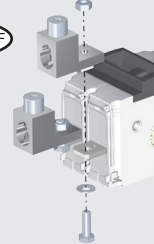


400A use 84090063 in side mounting,
500A not allowed in side mounting

Connection with LUGS (UL application) & with cables or bars (IEC application) - Raccordement avec bornes à cage (application UL) et câble ou barre recommandé (application CEI) - Conexión con bornes (aplicación UL) y recomendada para cables y pletinas (aplicación IEC)

Electrical clearances minimum distances (in/mm)		
	Phase/phase	Phase/ ground-earth
1	1 / 25,4	1.38 / 35
2	1 / 25,4	0.83 / 21

without accessories

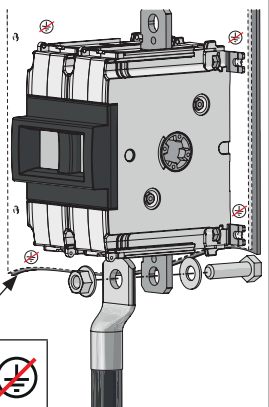


	Product Rating (A)	Designation Désignation Designación	Ref. lugs (1) Réf. bornes à cage (1) Ref. bornes (1)	Quantity per reference Quantité par ref Cantidad por referencia	Openings per lug Nombre de points de connexion Numero de puntos de conexión	Size Section Sección (AWG)		Pressure screw torque Couple de serrage Par de apriete tornillo de presión			Bolt torque Couple de serrage Par de apriete tornillo						
						min.	max.	lb.in	Nm	Size	lb.in	Nm	Size		in	mm	
1	100 - 250		39542023 (2)	2	2	Cu:14 Al:12 8 6 3	10 8 4 2/0	35 4,5 40 5,1 45 5,6 50	○	3/16	160	18	●	13	1.29	32,5	
			39543023 (2)	3													
			39544023 (2)	4													
2	275 - 325		39542040 (2)	2	1 2	4 1/0	600 KCMIL 250 KCMIL	550	62,1	○	1/2	310	35	●	15 17	1.79	45,7
			39543040 (2)	3													
			39544040 (2)	4													
2	275 - 500		39542060 (2)	2	2	2	600 KCMIL	375	42,4	○	3/8				2.74	69,7	
			39543060 (2)	3													
			39544060(2)	4													

(1) Interphase barriers must be installed on the products 1 or 2 / Les écrans entre phase doivent être installés sur les produits 1 ou 2.
(2) Captive nut 84990xxx is mandatory / Ecrou captif 84990xxx est obligatoire.

le	Nominal Cu cable section Section nominale câbles rigides Cu Sección máx. de cables de cobre rigidos	Nominal Al cable section Section nominale câbles rigides Al Sección máx. de cables de Alu. rigidos	Maximum busbar width Largeur max. barre Largo máx. barra		Tightening torque Couple de serrage Par de apriete	Size		
			Non isolated bars	Isolated bars with inter-phase barrier				
1	160 A (1)	70 mm ²	120 mm ²	≤ 20 mm	≤ 25 mm	159.31 lb.in 18 Nm	●	13
	250 A (1)	120 mm ²	185 mm ²					
	315 A (1)	185 mm ² (to use with reduced cable lug)	on consultation / sur consultation / en la consulta					
2	400 A (1)	240 mm ²	2 x 150 mm ²	≤ 25 mm	≤ 32 mm	309.77 lb.in 35 Nm	●	15 - 17
	630 A (1)	2 x 185 mm ²	2 x 300 mm ²					

(1) Long interphase barriers 8499221X must be installed on the products 1 or 2 / Les écrans entre phase longs 8499221X doivent être installés sur les produits 1 ou 2.



	H (in/mm)	W (in/mm)
1+1P	14.17/360	6.97/177
2P	14.17/360	6.24/158,5
2+2P	14.17/360	10.51/267

For 1500Vdc 630A PV2 applications in enclosure, with either floating or grounded metallic back plate, a H x W isolation plate must be mounted between the product and back plate. Products pads must also be oriented at 90°.



Fig. A

84090016
L= 0.35in / 9mm
84090040
L= 1.38in / 35mm

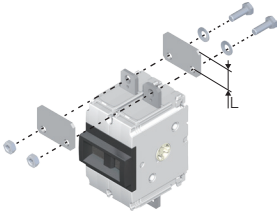


Fig. B

84090024
L= 1.61in / 41mm
84090039
L= 1.02in / 26mm

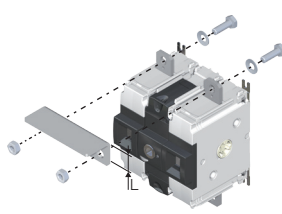
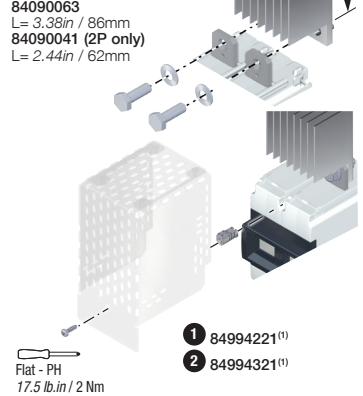


Fig. C

84090025
L= 1.26in / 32mm
84090031
L= 2.04in / 52mm
84090063
L= 3.38in / 86mm
84090041 (2P only)
L= 2.44in / 62mm

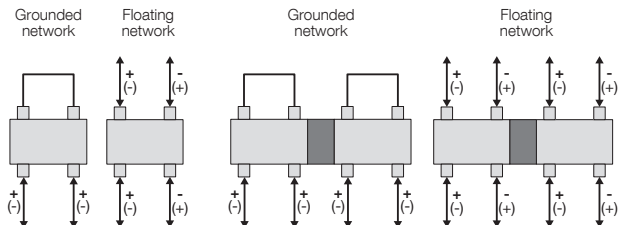


Grounded Network

		1 PV circuit Up to 1500 VDC 2P		2 PV circuit Up to 1000 VDC 2P		Tightening torque Couple de serrage Par de apriete	Size			
		Ref.	Fig.	Ref.	Fig.					
	1	UL	100A / 200A	84090016	A	-	-	159.31 lb.in 18 Nm		13
			250A							
	2	UL	275A	84090040	A	-	-	309.77 lb.in 35 Nm		15-17
			325A							
	1	UL	100A / 200A	84090024	B	-	-	159.31 lb.in 18 Nm		13
			250A							
	2	UL	275A	84090039	B	-	-	309.77 lb.in 35 Nm		15-17
			325A							
			400A							
	2	UL	400A	-	-	84090041 84090063	C	309.77 lb.in 35 Nm		15-17
			500A	-	84090063					

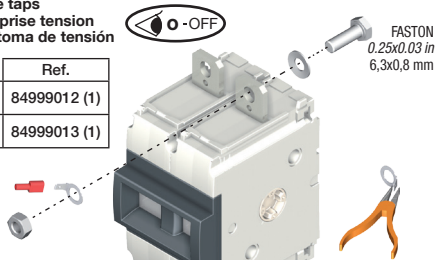
Pole connection in series - Configuration raccordement - Conexión de los polos en serie
1 PV circuit - up to 1500 VDC / 2 PV circuit - up to 1500 VDC

Grounded systems: in some installation standards, this configuration might not be allowed.
For ungrounded systems, see NEC 690.35 (NEC2008, NEC2011, NEC2014, NFPA70).
For multiple polarity switching (ungrounded systems or multiple circuit switching), interphase barrier must be installed before energizing.



Voltage taps
Cosse prise tension
Kit de toma de tensión

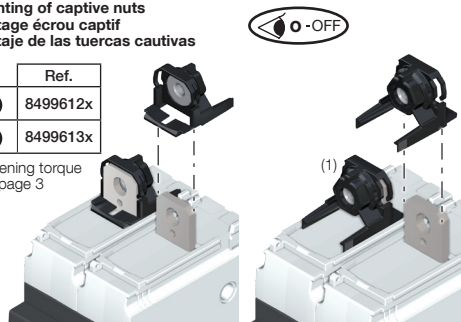
	Ref.
1	84999012 (1)
2	84999013 (1)



Mounting of captive nuts
Montage écrou captif
Montaje de las tuercas cautivas

	Ref.
1	8499612x
2	8499613x

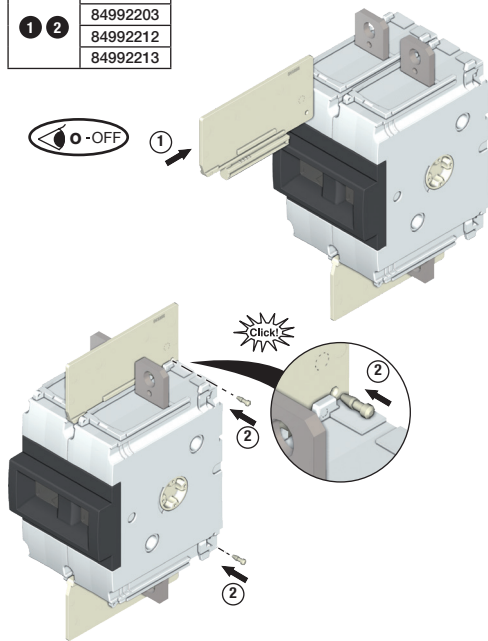
Tightening torque
 see: page 3



Interphase barrier mounting
Montage des écrans entre phase
Montaje de pantalla de separación entre pletinas

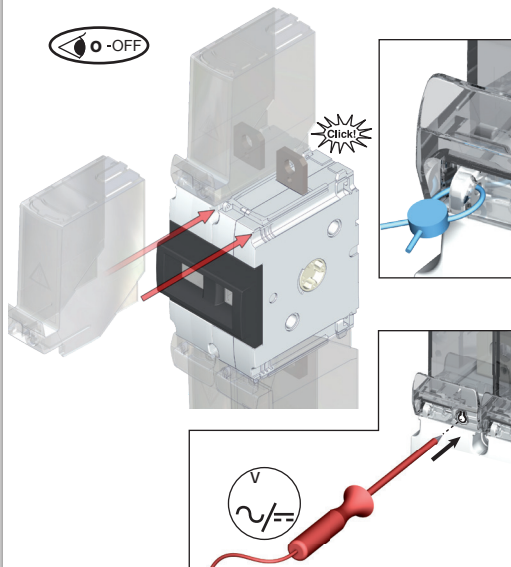
For products not delivered with interphase barriers, the reference are:

	Ref.
1	84992202
2	84992203
1	84992212
2	84992213



Terminal shroud mounting
Montage des caches bornes
Montaje cubrebornes

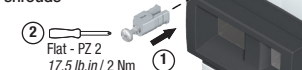
	Ref.
1	849942x3
	849942x4
2	849943x3
	849943x4



Mounting of holding insert
Montage chevilles
Montaje de las clavijas

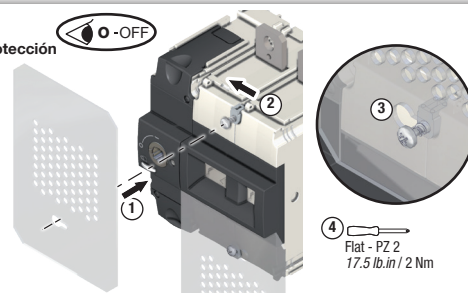
	Ref.
1	8499622x
2	8499622x

Note: when used, will block the interphase barrier or terminal shrouds



Mounting of terminal covers
Montage des capots
Montaje de las pantallas de protección

	Ref.
1	84993222
	84993232
	84993242
	84993322 (1)
	84993332 (1)
	84993342 (1)
2	84993722
	84993732
	84993742



4 Flat - PZ 2
 17.5 lb.in / 2 Nm

Mounting of auxiliary contacts
Montage des contacts auxiliaires
Montaje de los contactos auxiliares

Ref.	Type	Min. current (A)	I _{th} (A)	Operating Current I _e (A)				
				24 VDC	48 VDC	230 VDC	440 VDC	690 VDC
				DC-14	DC-14	AC-15	AC-15	AC-15
1 84990001	NO/NC standard	12,5 mA / 24 V	10	1	0,2	4	4	-
2 84990002	NO/NC low level	1 mA / 4 V	10	1	0,2	2	1	-
2 84990003	NC 600V	10 mA / 24 V	10	1	0,2	4	4	0,5

Cu	75° C min
	AWG min 1x 20 / 2x 16 AWG max 1x 14 / 2x 14
	min 1x 0,5 mm ² / 2x 1,5 mm ² max 1x 2,5 mm ² / 2x 2,5 mm ²
	0.31in / 8mm
	Flat 5 - PZ 2 - 7.08 lb.in / 0,8 Nm

Line terminals of the two auxiliary contacts placed side by side must be of the same polarity. Surrounding temperature max: 75 °C (UL only)
 Les raccordements entre deux contacts auxiliaires côte à côte doivent être de la même polarité. Température de proximité max: 75 °C (UL seulement)

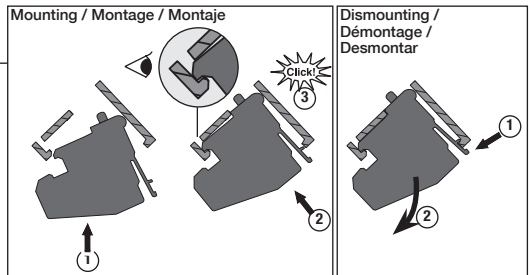
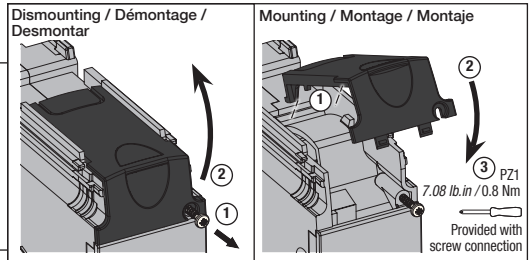
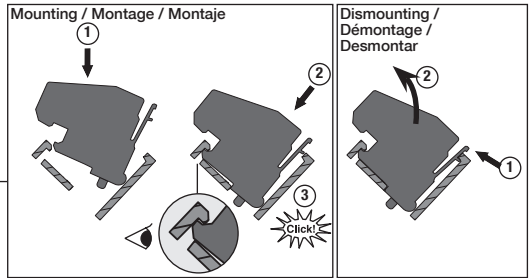
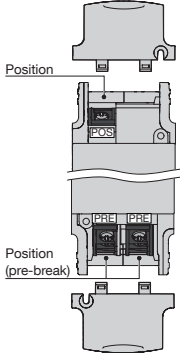
Conexiones de entrada de los contactos auxiliares adyacentes deben ser de la misma polaridad. Temperatura cerca max: 75 ° C (sólo UL).



84990001
84990002

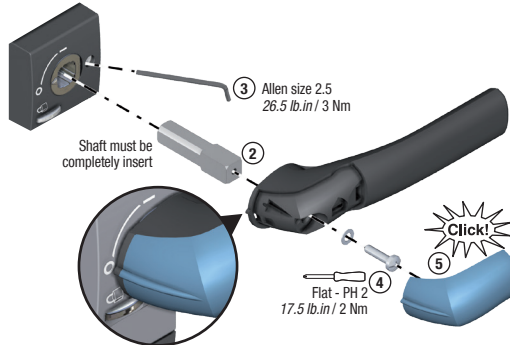
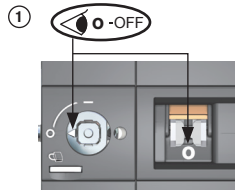


84990003

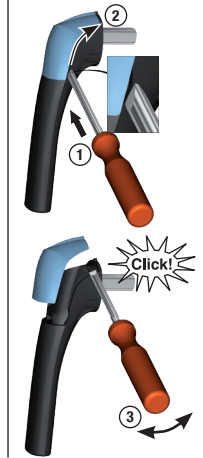


Direct handle mounting
Montage poignée direct
Montaje mando directo

	Ref.
①	849950x2 (1)
②	849950x3 (1)

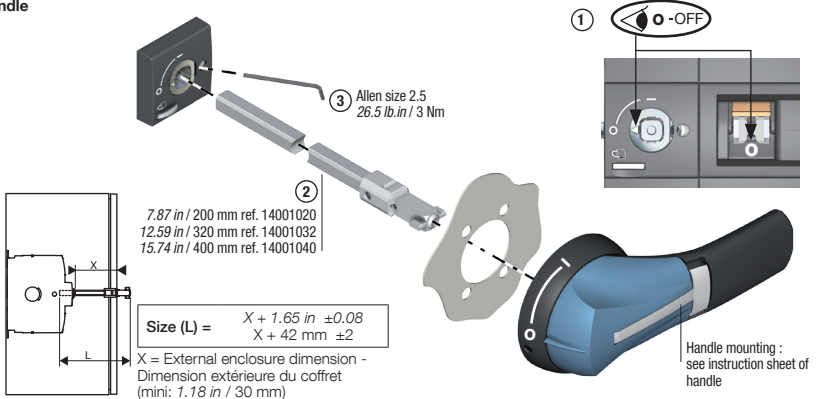


Cover dismantling
Démontage du capot
Desmontar la cubierta



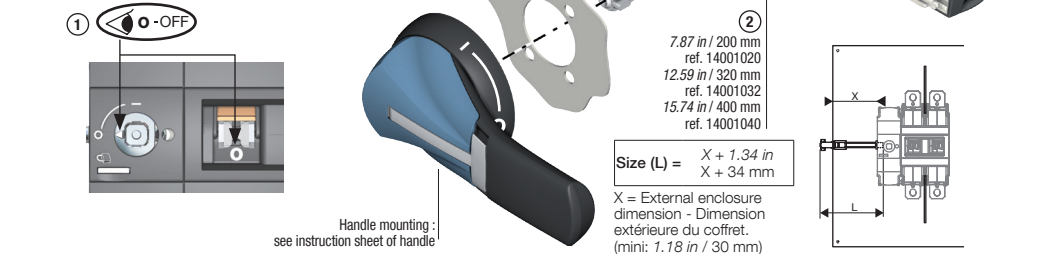
External front operation handle
Commande frontale
Mando frontal

	Ref.
①	74212111 (1) 14A12111 (1)
②	742G2111 (2) 14AG2111
	742F2111 (2) 14AF2111
	742D2111 (2) 14AD2111
	742E2111 (2) 14AE2111
	742D2911 (2) 14AD2911 (2)
	742E2911 (2) 14AE2911 (2)



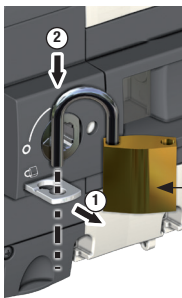
External Left Side operation
Commande latéral extérieure gauche
Mando lateral exterior izquierdo

	Ref.
①	14YA2111 142J6111 14AA2111 14AJ2111
②	14YB2111 142K6111 14AB2111

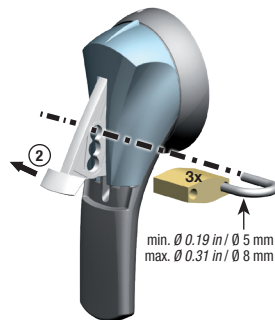


(1) Not UL certified
 (2) Not for double circuit

Padlocking on handle or product
Cadenassage sur produit ou poignée
Enclavamiento sobre el producto
o sobre el mando



min: 1x $\emptyset 0.12$ in / $\emptyset 3$ mm
 max: 2x $\emptyset 0.24$ in / $\emptyset 6$ mm
 1x $\emptyset 0.28$ in / $\emptyset 7$ mm
 & 1x $\emptyset 0.24$ in / $\emptyset 6$ mm



min. $\emptyset 0.19$ in / $\emptyset 5$ mm
 max. $\emptyset 0.31$ in / $\emptyset 8$ mm

Verification of the product and its installation before power ON
Vérification du produit et de son installation avant mise en service
Verificación del producto y de su instalación antes de la puesta en marcha

Action to be performed Action à effectuer Acción a realizar	Final state of the product Etat final du produit Estado final del producto	State auxiliary contact		Padlock feature on the product
		PRE (Pre-break)	POS (contact ON position)	
<p>Handle from 0 to 1</p>				NO
<p>Handle from 1 to 0</p>				Possible

1) Periodic check

During installation operation or after a long period of shutdown, maintenance is recommended and consist in mechanical as described above (recommended frequency for maintenance: 1 times per year).

1) Vérification périodique

En cours d'exploitation et selon les règles en vigueur ou après un arrêt prolongé ou un défaut, il est recommandé de faire les vérifications ci-dessus (recommandé 1 fois par an).

1) Verificación periódica

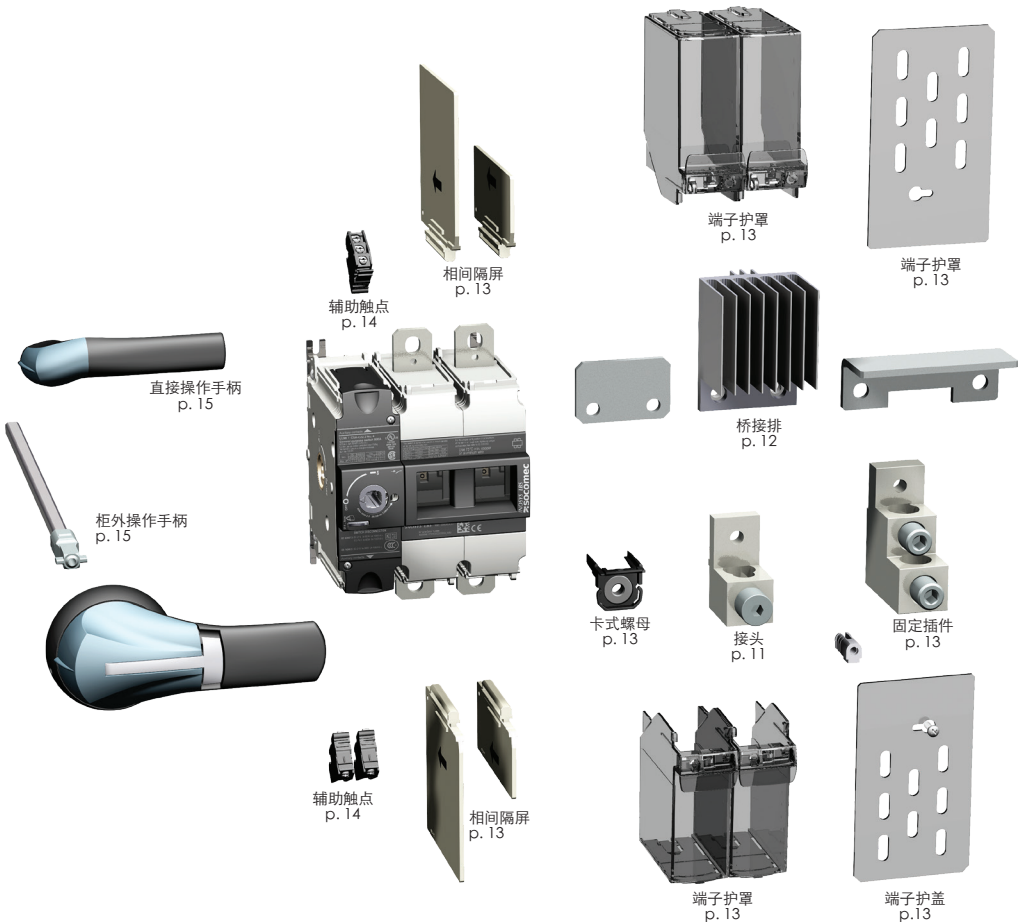
Cuando el producto está funcionando y según las reglas vigentes o después de un paro prolongado o de un defecto, se recomienda realizar las verificaciones mencionadas más arriba (1 vez cada año).

INOSYS LBS
PV/DC开关 - 100至630 A
IEC : 86Pxxxxx / IEC & UL : 87Pxxxxx



①	IEC	160 A / 250 A / 315 A				
	UL	100 A / 200 A / 250 A				
②	IEC	400 A / 630 A				
	UL	275 A / 325 A / 400 A / 500 A				

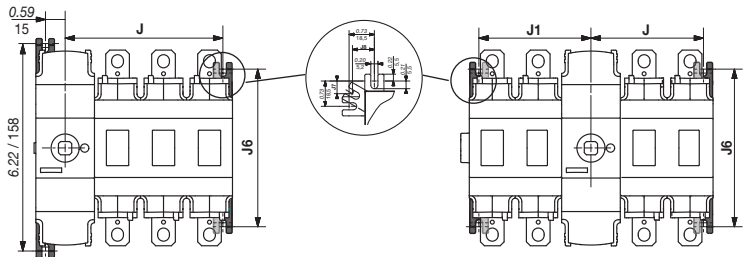
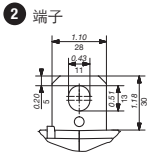
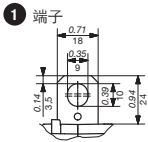
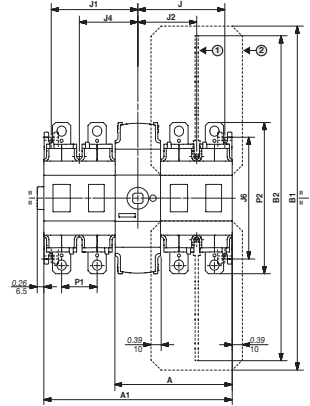
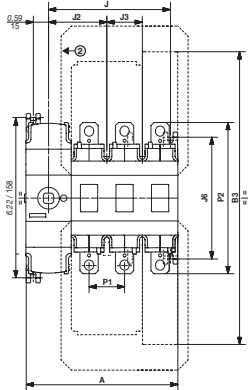
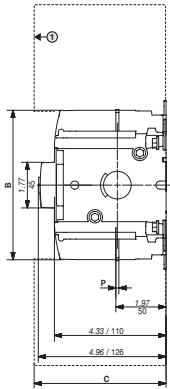
开关和附件



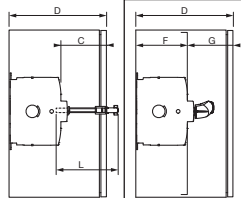
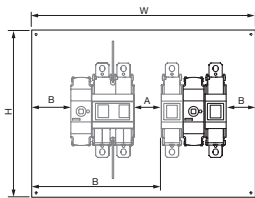
- ① 相间隔屏
- ② 端子护屏
- ③ 端子护罩

	A	A1	J	J1	J	J	
	2P	3P	1+1P/2+2P	1+1P/2+2P	1+1P/2+2P	2P	3P
① in	4.60	5.98	4.60/7.36	1.97/3.37	2.05/3.44	3.35	4.72
mm	117	152	117/187	50.5/85.5	52.5/87.5	85.5	120.5
② in	5.40	7.17	5.40/8.94	2.36/4.15	2.44/4.23	4.13	-
mm	137	182	137/227	60.5/105.5	62.5/107.5	105.5	-

	B	B1	B2		B3	C		J2	J3	J4	J6	P1	P2	
			IEC short	IEC long	UL	IEC	UL							
① in	5.90	13.35	7.85	12.61	10.31	11.64	4.33	4.33	2.26	1.38	2.34	4.72	1.38	5.87
mm	154	339	199	320	262	296	110	110	57.5	35	59.5	120	35	149
② in	5.90	16.28	9.35	14.11	15.5	14.12	4.33	5.31	2.64	1.77	2.72	6.22	1.77	7.87
mm	154	414	237	358	394	359	110	135	67.5	45	69.5	158	45	200



最小机壳尺寸UL98B · IEC



机壳外部尺寸

最小机壳尺寸		高 (in/mm)	宽 (in/mm)	深 (in/mm)
①	1P	24/609	16/406	6/152
	2P	24/609	16/406	6/152
	3P	24/609	16/406	6/152
②	1P	36/914 (40/1016 替 275A)	24/609	8/203
	2P	36/914	24/609	8/203
	4P	36/914	24/609	8/203
		(48/1219 替 500A)	(36/914 替 500A)	(12/304 替 500A)

间距	①		②	
	in	mm	in	mm
A最小	3.00	76.2	3.00	76.2
B最小	1.50	38.1	1.50	38.1
C最小	0.87	22	1.08	27.5
F最小	4.33	110	5.47	137.5
G最小	0	0	0.5	12.7

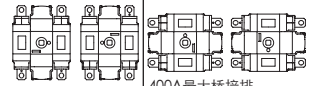
安装



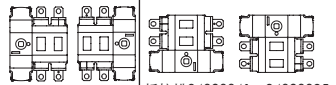
PZ 2
22.12 lb.in / 2,5 Nm

安装方向

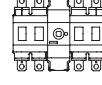
可使用所有的安装方向。
可能需要降容 - 请联系我们。



400A最大桥接排
84090039



桥接排84090041、84090025
未经UL认证

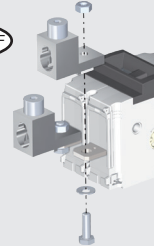


400A在侧面安装时使用84090063
，500A不允许用于侧面安装。

LUGS连接 (UL应用) 以及电缆或铜排连接 (IEC应用)

电气间距最小距离(in/mm)		
	相/相	相/接地
①	1 / 25,4	1.38 / 35
②	1 / 25,4	0.83 / 21

不带附件

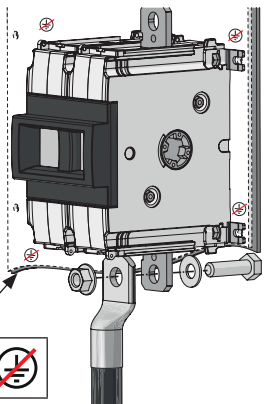


	产品额定值(A)	名称	接头产品编号(1)	每个产品编号包含的数量	每个端子接头的开口	尺寸		压力螺钉力矩		螺栓力矩					
						最小	最大	lb.in	Nm	尺寸	lb.in	Nm		尺寸	in
①	100 - 250	 IHI 252-0-TP-STK-34-49-HEX	39542023 (2)	2	2	Cu:14, Al:12	10	35	4	3/16	160	18	● 13	1.29	32,5
			39543023 (2)	3			8	40	4,5						
			39544023 (2)	4			6	45	5,1						
②	275 - 325	 CMC LA-630R	39542040 (2)	2	1	600 KCML	4	60	250	1/2	310	35	● 15 17	1.79	45,7
			39543040 (2)	3			1/0	50	5,6						
			39544040 (2)	4			2/0	50	5,6						
	275 - 500	 CMC PV2-600	39542060 (2)	2	2	600 KCML	4	60	250	3/8	375	42,4	○	2.74	69,7
			39543060 (2)	3											
			39544060(2)	4											

- ⚠ (1) 必须在产品上安装相间隔屏 ① 或 ②。
(2) 卡式螺母84996xxx是强制性的。

	le	额定铜电缆横截面	额定铝电缆横截面	最大铜排宽度		拧紧力矩	尺寸
				非隔离铜排	带相间隔屏的隔离铜排		
①	160 A (1)	70 mm ²	120 mm ²	≤ 20 mm	≤ 25 mm	159.31 lb.in 18 Nm	● 13
	250 A (1)	120 mm ²	185 mm ²				
	315 A (1)	185 mm ² (与缩短电缆接头一起使用)	在咨询				
②	400 A (1)	240 mm ²	2 x 150 mm ²	≤ 25 mm	≤ 32 mm	309.77 lb.in 35 Nm	● 15 - 17
	630 A (1)	2 x 185 mm ²	2 x 300 mm ²				

- (1) 必须在产品上安装相间隔屏 ① 或 ②。



	高 (in/mm)	宽 (in/mm)
1+1P	14.17/360	6.97/177
2P	14.17/360	6.24/158,5
2+2P	14.17/360	10.51/267

⚠ 对于外壳中的1500Vdc 630A PV2应用，带浮动或接地金属背板，必须在产品和背板之间安装H x W隔离板。产品垫也必须定向在90°。



图 A

84090016
L = 0.35in / 9mm
84090040
L = 1.38in / 35mm



不适用于100A UL

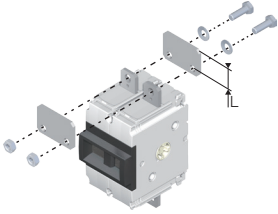


图 B

84090024
L = 1.61in / 41mm
84090039
L = 1.02in / 26mm

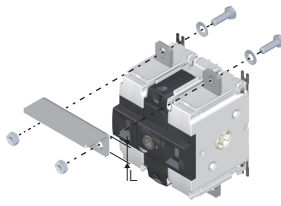
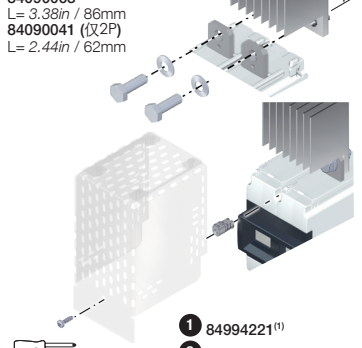


图 C

84090025
L = 1.26in / 32mm
84090031
L = 2.04in / 52mm
84090063
L = 3.38in / 86mm
84090041 (仅2P)
L = 2.44in / 62mm



平面 - PH
17.5 lb.in / 2 Nm

- 1 84994221⁽¹⁾
- 2 84994321⁽¹⁾

接地网络

			1个PV回路 可达1500 VDC 2P		2个PV回路 可达1500 VDC 2P		拧紧力矩	尺寸		
			Ref.	Fig.	Ref.	Fig.				
	1	UL	100A / 200A	84090016	A	-	-	159.31 lb.in 18 Nm		13
			250A							
	2	UL	275A	84090040	A	-	-	309.77 lb.in 35 Nm		15-17
			325A							
	1	UL	100A / 200A	84090024	B	-	-	159.31 lb.in 18 Nm		13
			250A							
	2	UL	275A	84090039	B	-	-	309.77 lb.in 35 Nm		15-17
			325A							
	2	UL	400A	-	-	84090041 84090063	C	309.77 lb.in 35 Nm		15-17
			500A	-	84090063					

串联极

1个PV回路 - 可达1500 VDC / 2个PV回路 - 可达1500 VDC

接地系统：在一些安装标准中，可能不允许此配置。

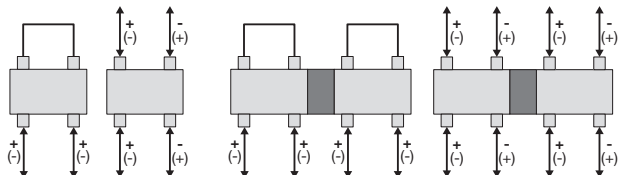
对于未接地的系统，请参阅NEC 690.35 (NEC2008、NEC2011、NEC2014、NFPA70)。对于多极开关（未接地系统或多回路开关），必须在通电前安装相间隔屏。

接地网络

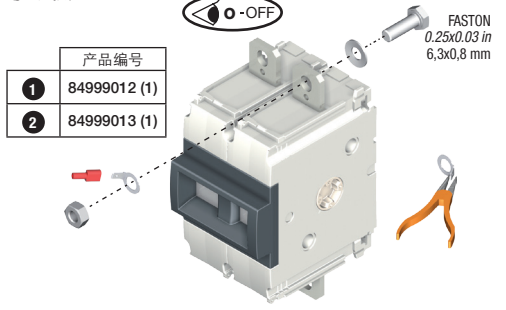
浮动网络

接地网络

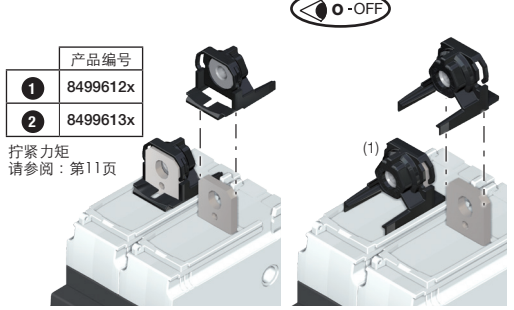
浮动网络



电压分接头

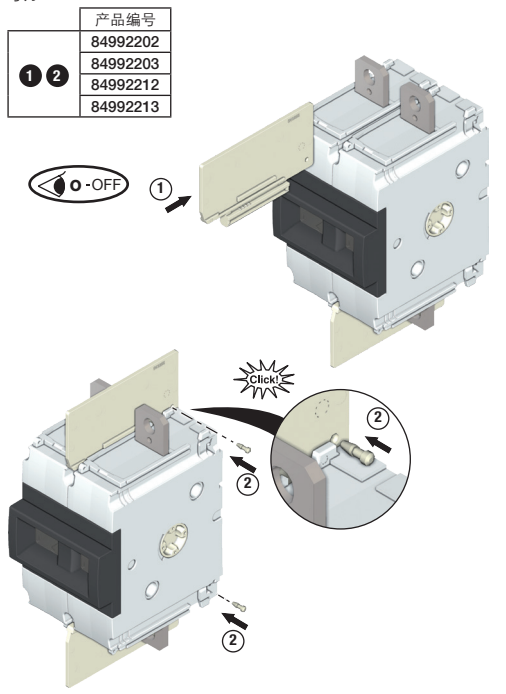


安装卡式螺母

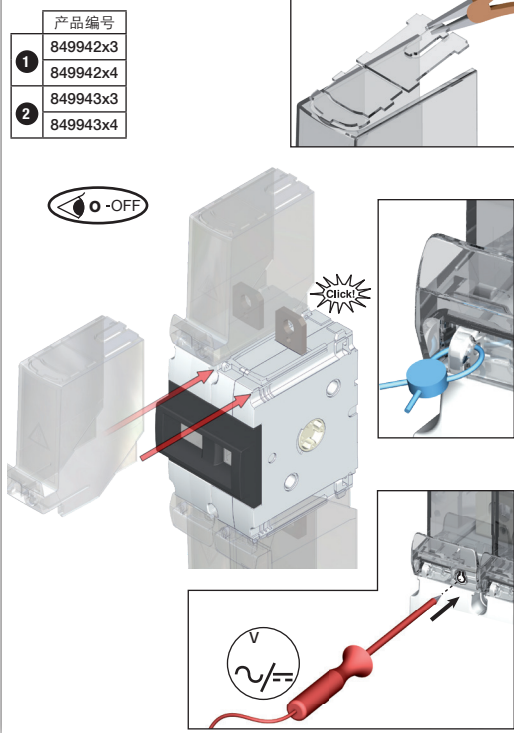


安装相间隔屏

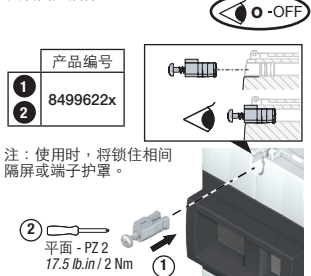
对于未提供相间隔屏的产品，产品编号为：



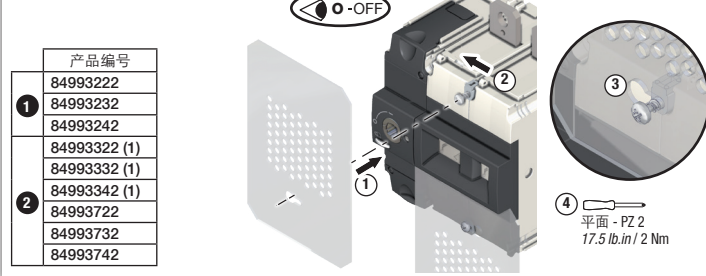
安装端子护罩



安装固定插件







安装端子护盖



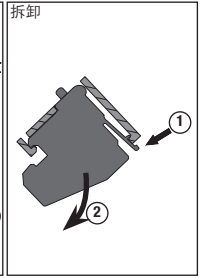
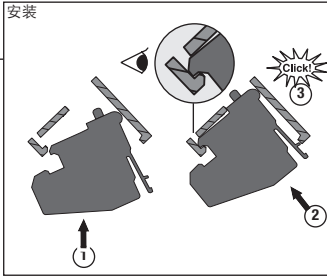
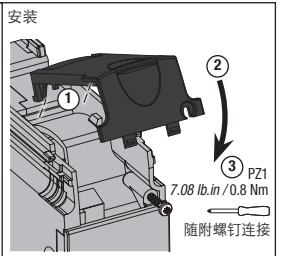
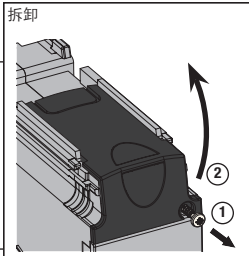
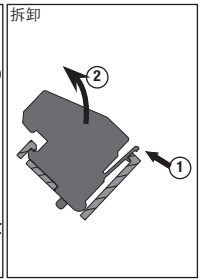
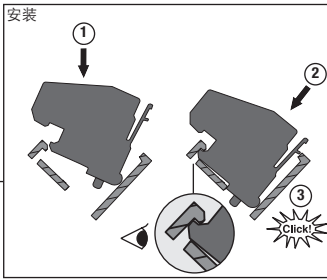
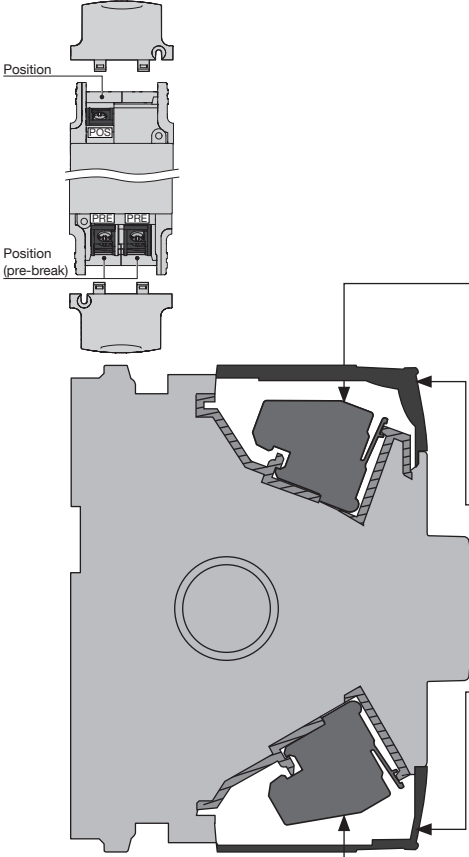
(1) 未经UL认证
(2) 不适用于双回路

安装辅助触点

Cu	最小75°C
	AWG min 1x 20 / 2x 16 AWG max 1x 14 / 2x 14
	min 1x 0,5 mm ² / 2x 1,5 mm ² max 1x 2,5 mm ² / 2x 2,5 mm ²
	0.31in / 8mm
	平面5 - PZ 2 - 7.08 lb.in / 0,8 Nm

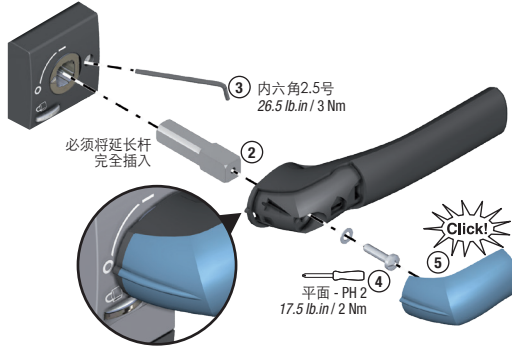
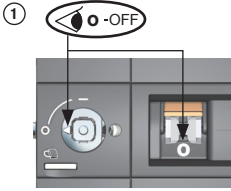
产品编号	类型	最小电流 (A)	I _{th} (A)	工作电流I _e (A)				
				24 VDC	48 VDC	230 VDC	440 VDC	690 VDC
				DC-14	DC-14	AC-15	AC-15	AC-15
1 84990001	NO/NC标准	12.5 mA / 24 V	10	1	0.2	4	4	-
2 84990002	NO/NC低电平	1 mA / 4 V	10	1	0.2	2	1	-
3 84990003	NC 600V	10 mA / 24 V	10	1	0.2	4	4	0.5

并排放置的两个辅助触点的线路端子必须是相同的极性。最大周围温度：75 ° C (仅UL)

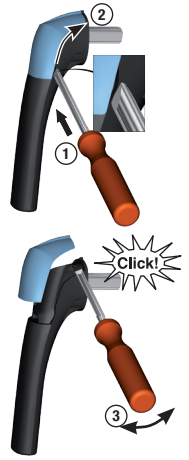


安装直接操作手柄

产品编号	
①	849950x2 (1)
②	849950x3 (1)

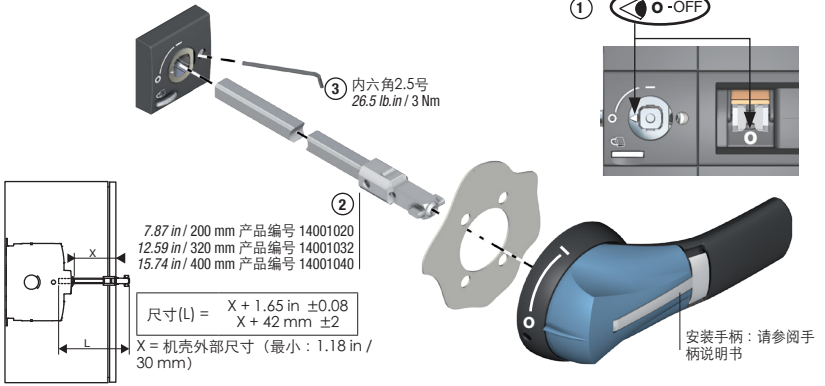


拆除护盖



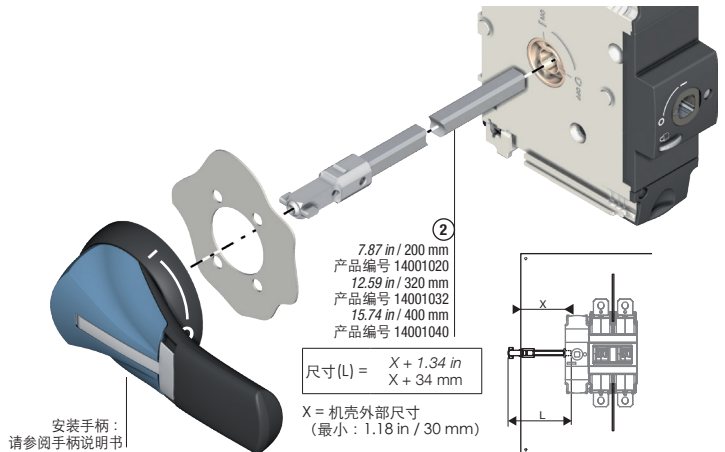
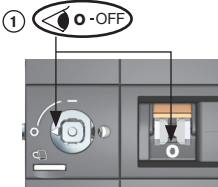
正面柜外操作手柄

产品编号	
①	74212111 (1) 14A12111 (1)
②	742G2111 (2) 14AG2111
①	742F2111 (2) 14AF2111
②	742D2111 (2) 14AD2111
②	742E2111 (2) 14AE2111
②	742D2911 (2) 14AD2911 (2)
②	742E2911 (2) 14AE2911 (2)



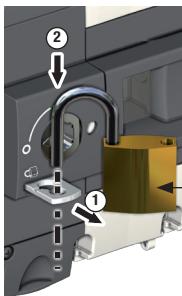
柜外左侧操作

产品编号	
①	14YA2111 142J6111 14AA2111 14AJ2111
②	14YB2111 142K6111 14AB2111

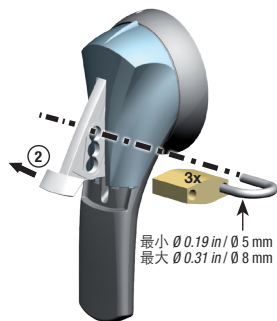


(1) 未经UL认证
(2) 不适用于双回路

将挂锁安装在手柄或产品上



最小: 1x $\emptyset 0.12$ in / $\emptyset 3$ mm
 最小: 2x $\emptyset 0.24$ in / $\emptyset 6$ mm
 1x $\emptyset 0.28$ in / $\emptyset 7$ mm
 & 1x $\emptyset 0.24$ in / $\emptyset 6$ mm



最小 $\emptyset 0.19$ in / $\emptyset 5$ mm
 最大 $\emptyset 0.31$ in / $\emptyset 8$ mm

接通电源前，验证产品及其安装。

需执行的操作	产品的最终状态	辅助触点状态		产品上的挂锁功能
		PRE (预断开)	POS (触点打开位置)	
<p>手柄 从1到0</p>				不能
<p>手柄 从1到0</p>				可以

1) 定期检查

执行安装操作过程中或长时间关机后，建议进行维护并包括上述机械（建议维护频率：每年1次）。