



Split-core current sensors TR-10, TR-16, TR-24, TR-36



The commitments of Socomec to respect the environment

As part of its environmental policy, Socomec is committed to:

- Develop innovating solutions primarily focused on energy efficiency to help its customer in the design of less energy-consuming, better managed and eco friendly installations.
- Diversify its product offer in the renewable energy and energy efficiency sectors,
- Minimize the environmental impact of its industrial activities through the progressive ISO 14001 certification of its production sites,
- Minimize at the preliminary design stage the environmental impacts of its products taking into account their whole life cycle,
- Provide his customers with reliable data on the environmental performance of the products.

Socomec is member of :

créer CLUSTER RESEARCH :
EXCELLENCE IN ECODSIGN
& RECYCLING



Gimélec

Environment and sustainable
development commissions

■ Representative product

Reference product

The representative product is the TR-16 with sales reference 48290552.

References covered by this PEP

TR-10, TR-24, TR-36 respectively of the sales references 48290551, 48290553, 48290554.

Function

To implement measurement points in existing installations during 10 years.

■ Material and substances

Declaration of the constitutive materials according to IEC 62474

Total weight including packaging: TR-36 : 335 g
 TR-24 : 240g
 TR-16 : 140 g
 TR-10 : 100 g

For the TR-16

Metals, % weight		Plastics, % weight		Others, % weight	
Stainless steels	24%	Thermoplastics	26%	Ceramics and Glass	1%
Aluminium and its alloys	/	Others	<1%	Others Inorganics	<1%
Copper and its alloys	12,5%			Cardboard and paper	11%
Nickel and its alloys	24%			Others Organics	<1%
Precious Metals	<1%				
Other non-ferrous metals and alloys	/				

TR-16	Metals, % weight: 62%	Plastics, % weight: 26%	Others, % weight: 12%
TR-36	Metals, % weight: 72,5%	Plastics, % weight: 20%	Others, % weight: 7,5%
TR-24	Metals, % weight: 69%	Plastics, % weight: 21%	Others, % weight: 10%
TR-10	Metals, % weight: 53%	Plastics, % weight: 30%	Others, % weight: 17%

The recycled content is estimated at 17,5 %.

Substances management

Socomec is leading a program to limit the use of hazardous substances in the design of new products and to monitor the presence of substances of concern in its supplies to anticipate future use restrictions.



ROHS directives 2002/95/EC and 2011/65/EC compliance: although the majority of Socomec products are outside the scope of the ROHS directives, a ROHS compliance process has been in progress on a voluntary basis since 2006. Product references covered by this PEP meet the requirements of the RoHS Directive on the restriction of substances such as lead, mercury, cadmium, hexavalent chromium, polybrominated biphenyl (PBB) and polybrominated diphenyl ethers (PBDEs).



REACH 1907/2006 regulation: to the best of our knowledge at the publication date of this document, none of the substance of the candidate list to authorization (SVHC) have been found in the references covered by this PEP.

■ Manufacturing

The products covered by this PEP are manufactured on a site where impacts on the environment are reduced by optimizing its energy consumption and by practicing a rigorous waste management.

Moreover, Socomec is committed to the progressive ISO 14001 certification of its manufacturing sites.

■ Distribution

As part of its distribution policy aiming to respect the environment, Socomec is in favor of groupage transports and ISO14001 certified logistic partners.



The packaging complies with Directive 94/62/EC. The sizing of the packaging has been optimized to ensure the best possible protection of the product at the lowest possible volume in order to reduce the impact of the transport stage on the environment.

Packaging design solutions favors mono-material recyclable cardboard without coloring or bleaching. The wedging of the packaged product is made of recycled cardboard, no polystyrene is used.

■ Installation

The installation stage consists in connecting the product to the existing electrical installation. The installation do not generate any significant impacts on the environment.

■ Use phase

Power consumption

Use phase scenario: continuous operation during 10 years.

Mode	TR-16's Power consumption (W)	Time distribution (%)
Active	0,34W	100

Product power consumption during its total lifespan (10 years) : 29,8 kWh
Declared consumption takes into account the maximum consumption of the electronic box.

Care and maintenance

The product does not require any maintenance under normal conditions of use.

Consumables

The product does not require consumables.

■ End of life

End of life treatment

Split-core current sensors do not contain any substances, mixtures or hazardous components within the meaning of annex VII of the directive WEEE 2012/19/EU which would require a dismantling for selective treatment of materials and components.

Split-core current sensors can go directly into sorting and crushing facilities for valorization in accordance with current legislation.

Recovery potential of the product according to IEC TR 62635

The total potential value of this product is 71,4%.
This potential value takes into account the material recycling and energy recovery.

■ Environmental impacts

Calculation methodology: life cycle assessment (LCA)



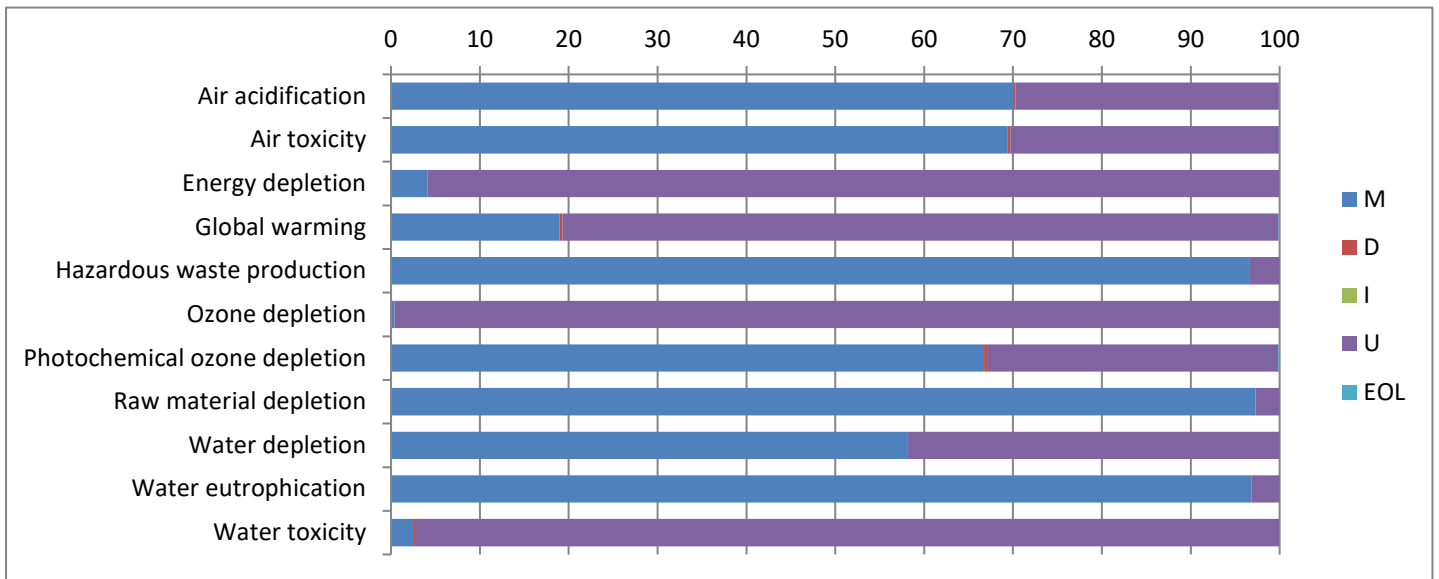
The calculation of the impacts on the environment was made using a life cycle assessment methodology in accordance with the ISO 14040 requirements and with PEP eco passport product category rules .For more details follow the link: www.pep-ecopassport.org

The whole life cycle has been taken into account:

Manufacturing (M)	From the raw material extraction to the last Socomec logistic platform, including packaging.
Distribution (D)	From the last Socomec logistic platform to the final customer following an average French distribution scenario.
Installation (I)	Neglected (*)
Use phase (U)	Power consumption required to operate the product during 20 years according to consumption scenario described on page 4. Energy model considered: French
End Of Life (EOL)	Road transport over 1000 kms from the final customer to the dismantling sites.

TR-16's environmental impact

Indicators	Units	M	D	I	U	EOL	Total	K ₁	K ₂	K ₃
Air acidification	kg H+ eq	1,17E+00	3,62E-03	0*	4,97E-01	1,21E-03	1,68E+00	4,63	1,88	0,63
Air toxicity	m ³	1,44E+06	5,38E+03	0*	6,3E+05	1,8E+03	2,08E+06	4,66	1,87	0,62
Energy depletion	MJ	1,71E+01	2,74E-01	0*	4,0E+02	9,15E-02	4,22E+02	8,58	1,79	0,68
Global warming	kg CO ₂ eq	1,08E+03	1,95E+01	0*	4,57E+03	6,49E+0	5,67E+03	7,62	1,8	0,67
Hazardous waste production	kg	2,00E-02	2,41E-08	0*	7,07E-04	8,04E-09	2,07E-02	2,16	1,47	0,82
Ozone depletion	kg CFC-11 eq	3,60E-05	3,69E-08	0*	9,27E-03	1,23E-08	9,31E-03	8,79	1,79	0,68
Photochemical ozone depletion	kg C ₂ H ₄ eq	7,04E-01	4,34E-03	0*	3,45E-01	1,45E-03	1,06E+00	4,72	1,83	0,64
Raw material depletion	Y-1	6,07E-15	3,98E-19	0	1,70E-16	1,33E-19	6,24E-15	2,5	1,60	0,72
Water depletion	dm ³	7,20E+01	2,02E-03	0*	5,2E+01	6,74E-04	1,24E+02	5,37	1,88	0,63
Water eutrophication	kg PO ₄ ³⁻ eq	3,17E+00	3,62E-05	0*	1,04E-01	1,21E-05	3,27E+00	3,12	1,95	0,59
Water toxicity	m ³	1,73E-01	8,33E-03	0*	6,50E+0	2,78E-03	6,68E+00	8,64	1,79	0,68



To get indicators of the TR-36, TR-24, TR-10 multiply the total column by coefficient K₁, K₂, K₃.

This document is intended to be only informative and non-contractual and does not create any right or obligation or commitment for Socomec towards its associates, customers or any other person or entity. All the values indicated in this document may change depending on many factors (use conditions, applications, installations, environment...). The life time mentioned in this document is only indicative and is not intended to be the minimal, maximal or average life time of the product.