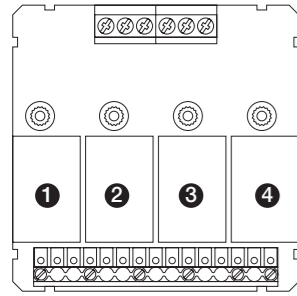


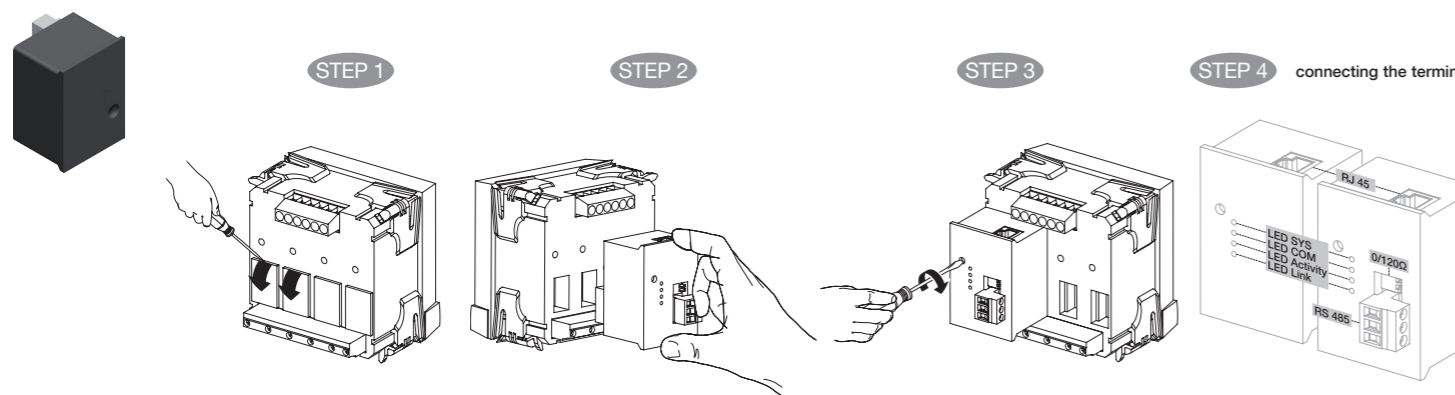
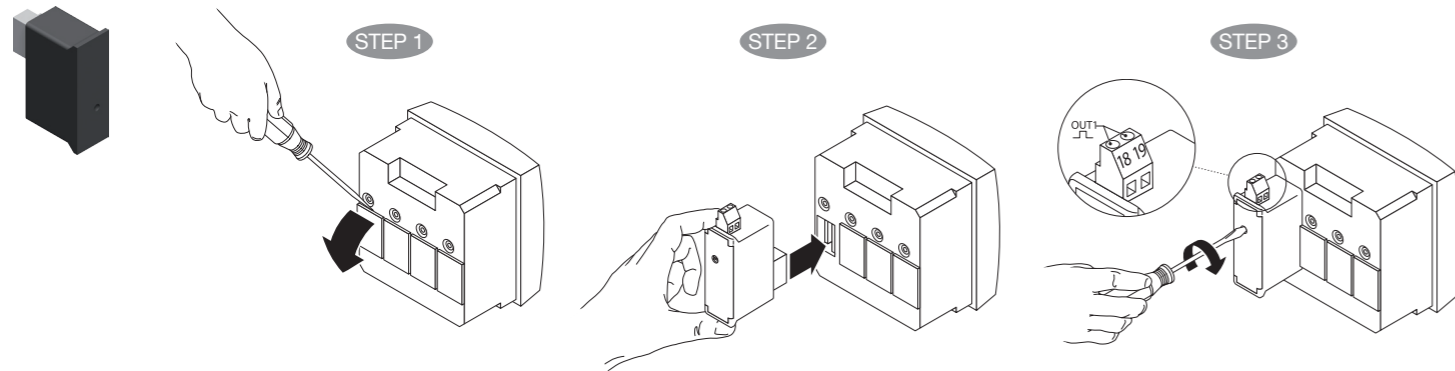


# DIRIS A-20, DIRIS A-30 & DIRIS A-41



	Reference	Maximum that can be installed on device	DIRIS A-20		DIRIS A-30 / A-41			
			①	②	①	②	③	④
Pulse Module	48250090	4	-	-	x	x	x	x
RS485 Modbus A-30	48250092	1	-	-	x	x	x	x
2 out analog Module	48250093	2	-	-	x*	x*	x*	x*
2 In /2 Out digital Module	48250094	3	-	-	x	x	x	x
Memory Module	48250097	1	-	-	-	x	x	-
Pulse Module	48250080	2	x	x	-	-	-	-
RS485 Modbus A-20	48250082	1	x	x	-	-	-	-
2In/2Out digital Module	48250084	2	x	x	-	-	-	-
3In/1Out digital Module	48250083	2	x	x	-	-	-	-
Ethernet Module	48250203	1	-	-	x	-	-	x
Ethernet Module Gateway	48250204	1	-	-	x	-	-	x
Profibus Module	48250205	1	-	-	x	-	-	x

\* If two modules are used they must be placed on slots 1 and 2



Has to be connected when product is not powered on

In case of use of 600V Ph-N cat III, please make sure to avoid any risk of electrical choke with the use of galvanic insulation barriers



[www.socomec.com/diris-a20](http://www.socomec.com/diris-a20)



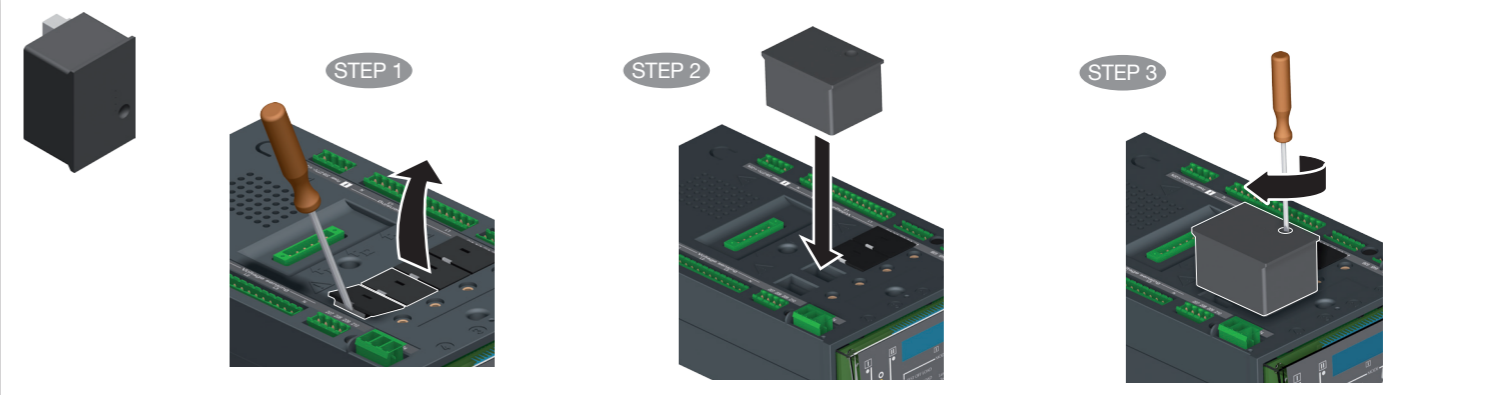
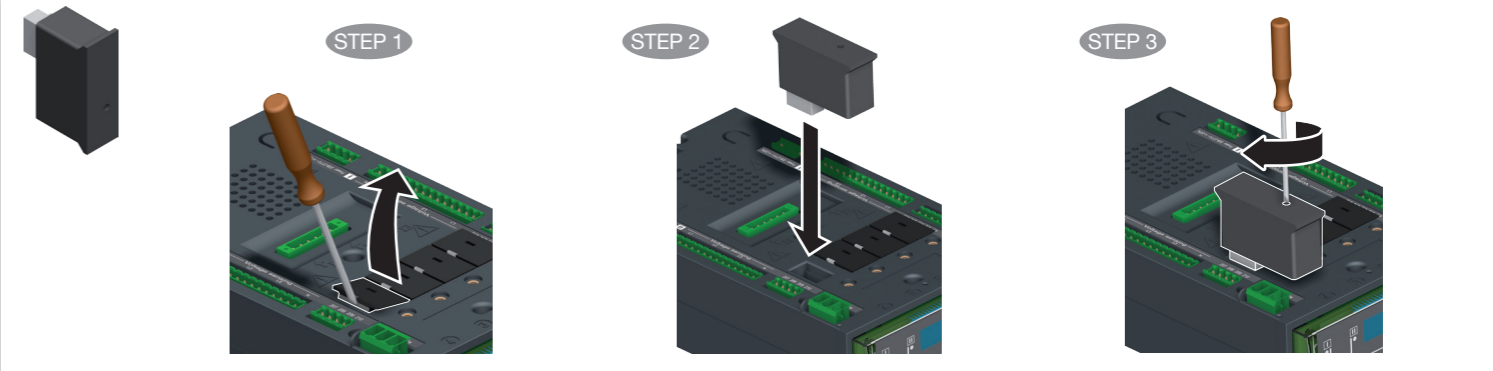
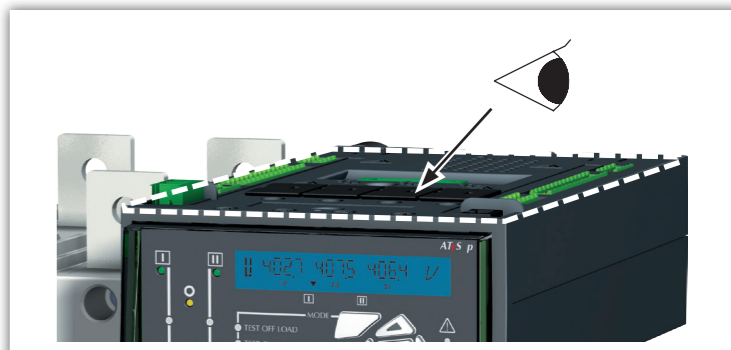
[www.socomec.com/diris-a30](http://www.socomec.com/diris-a30)

# ATyS p



	Reference	Maximum that can be installed on device
Ethernet Module	48250203	1
Ethernet Module Gateway	48250204	1*
2 In /2 Out digital Module	15992001	1*
RS485 Modbus Module	48250092	1*
2 out analog Module	48250093	4
Pulse Module	48250090	1

\* if using this module, other communication modules can't be installed



Prior to installation of the Ethernet module please make sure that you remove both covers from in between the ATyS p electronic controller and the Ethernet module.



[www.socomec.com/en/documentation-atys-p](http://www.socomec.com/en/documentation-atys-p)