



LocalView

LINUX & macOS

EN

CONTENTS

1. CERTIFICATE AND CONDITIONS OF WARRANTY	4
1.1 COPYRIGHT AND INTELLECTUAL PROPERTY OWNERSHIP RIGHTS.	4
1.2 LICENSE TO USE.	4
1.3 ENTRY INTO FORCE AND DURATION OF THE LICENSE.	4
1.4 WARRANTY CONDITIONS.	4
1.5 SOFTWARE UPDATES.	5
1.6 LIMITATIONS OF LIABILITY.	5
1.7 SEVERABILITY.	5
1.8 AMENDMENTS TO THE LICENCE.	5
1.9 APPLICABLE LAW.	5
2. SUMMARY	6
2.1 UPS MONITORING.	6
2.2 ALERT NOTIFICATION VIA EMAIL.	6
2.3 AUTOMATIC SHUTDOWN PROCEDURE.	6
2.4 UPS COMMUNICATION WITH THE PC OR MAC.	6
3. LOCAL VIEW FOR LINUX	7
3.1 COMPATIBILITY.	7
3.1.1 HARDWARE COMPATIBILITY.	7
3.1.2 LINUX DISTRIBUTION COMPATIBILITY.	7
3.1.3 WEB BROWSER COMPATIBILITY.	7
3.2 INSTALLATION.	8
3.2.1 USER ACCOUNT AND ADMIN RIGHTS.	8
3.2.2 LOCALVIEW PACKAGE.	8
3.3 COMMUNICATION CHANNEL.	8
3.4 RUNNING LOCAL VIEW.	9
3.4.1 MANUALLY VIA TERMINAL.	9
3.4.2 RUNNING LOCALVIEW AS A DAEMON.	9
3.4.3 OPENING THE USER INTERFACE.	9
3.4.4 UPS COMMUNICATION CONFIGURATION.	10
3.5 NOTIFICATION UTILITY INSTALLATION.	11
3.5.1 NOTIFICATION.	12
3.5.2 NOTIFICATION LIST.	12
3.5.3 LOCALVIEW UPDATE.	12
4. LOCAL VIEW FOR COMPUTER WITH MAC OS	13
4.1 COMPATIBILITY.	13
4.1.1 HARDWARE COMPATIBILITY.	13
4.1.2 MAC OS COMPATIBILITY.	13
4.1.3 WEB BROWSER COMPATIBILITY.	13
4.2 INSTALLATION.	13
4.2.1 ROSETTA.	13
4.2.2 USER ACCOUNT.	13
4.2.3 LOCALVIEW PACKAGE.	13
4.3 COMMUNICATION CHANNEL.	13
4.4 RUNNING LOCAL VIEW.	14
4.4.1 RUNNING LOCALVIEW AS A SERVICE.	14
4.4.2 OPENING THE USER INTERFACE.	14
4.4.3 UPS COMMUNICATION CONFIGURATION.	15
4.5 STARTING APPLICATION ON A MAC.	16

4.6 NOTIFICATION	17
4.6.1 NOTIFICATION LIST	17
4.6.2 LOCALVIEW UPDATE	17
5. USER INTERFACE WEB PAGE	18
5.1 GENERAL OVERVIEW	18
5.2 SERVICE AND UPS STATUS	18
5.2.1 UPS STATUS	18
5.2.2 UPS PARAMETERS	18
5.2.3 SWITCH TO LOCALVIEW VIEWER / EXPERT APPLICATIONS.	19
5.3 USER INTERFACE	19
5.4 UPS REFERENCE	19
5.5 UPS STATUS	20
5.6 SYNOPTIC ANIMATION	20
5.7 STATUS AND ALARMS MESSAGE	22
5.8 BATTERY TEST CONTROL	22
5.9 ACK BUTTON	22
6. EXPERT	23
6.1 MENU NAVIGATION	23
6.2 EVENT LOG	24
6.2.1 LIST OF EVENTS STORED	24
6.2.2 EVENTS FILTERING	24
6.2.3 EXPORT	24
6.3 MEASUREMENTS HISTORY	25
6.3.1 LIST OF MEASUREMENTS STORED:	25
6.3.2 EXPORT	25
6.4 EMAIL CONFIGURATION	26
6.4.1 SMTP CONFIG	26
6.4.2 EVENTS	26
6.4.3 RECEIVER	26
6.4.4 SEND A TEST EMAIL	26
6.4.5 SAVING OR CANCELLING THE SETTINGS	27
6.4.6 ALARM CRITICALITY MANAGEMENT	27
6.4.7 DELAY MANAGEMENT	27
6.4.8 EMAIL FORMAT	27
6.5 SHUTDOWN CONFIGURATION	28
6.5.1 SHUTDOWN EVENTS SELECTION	28
6.5.2 SHUTDOWN TIMING	29
6.5.3 SCRIPT SETTINGS	29
6.5.4 SHUTDOWN COMMAND	29
6.5.5 UPS SHUTOFF	30
6.5.6 TEST SHUTDOWN PROCEDURE	30
6.5.7 USER NOTIFICATION	30
6.5.8 SAVING OF CANCEL THE SETTINGS	30
6.6 USER CONFIGURATION – MISCELLANEOUS	31
6.6.1 LANGUAGE	31
6.6.2 FILTER	31
6.6.3 HTTP PORT	31
6.6.4 UPDATE	31
6.6.5 COMMUNICATION PORT	32
6.6.6 SAVING OF CANCEL THE SETTINGS	32
7. TROUBLESHOOTING	33

1. CERTIFICATE AND CONDITIONS OF WARRANTY

Installing the software means full acceptance of all contractual terms. For this reason, please read all the points listed below carefully. If you do not agree with one or more of the contractual terms, do not install this software and/or return it immediately to SOCOMEC.

1.1 COPYRIGHT AND INTELLECTUAL PROPERTY OWNERSHIP RIGHTS

The user of the software acknowledges that all rights referred thereto and the copyright belong to SOCOMEC, in relation to both the source code and the object code.

Anyone entering into possession of the software without prior authorization from SOCOMEC must immediately uninstall it, if it has been installed, and return it to SOCOMEC. If such persons fail to take this action SOCOMEC will exercise its rights to the full extent permitted by civil and criminal law.

The software and documentation are protected by copyright. The unlawful use and/or copying partially or totally of the software shall lead to claims for damages. It is permitted to create a back-up copy of the media supplied by SOCOMEC (CD Rom). This documentation and software are not specifications. SOCOMEC reserves the right to make any changes to data without prior notice.

SOCOMEC retains the full and exclusive ownership of all intellectual rights, such as, but not limited to the ones related to documentation, software, source code, object code, etc. Only a personal right to utilize the documentation and software for the application indicated by SOCOMEC is granted to their recipients. All reproduction, modification, dissemination of this documentation and software whether in part or whole and by any manner are expressly prohibited except upon SOCOMEC's express prior written consent.

1.2 LICENSE TO USE

The LOCAL VIEW and supporting documentation are freely installable for private use solely.

The software contains confidential information. This license does not authorize the user to modify, adapt, decompile, or disassemble the software in question or to reconstruct the source code using any other method. SOCOMEC will protect its rights against any such unauthorized use to the full extent permitted by civil and criminal law.

The software may not be hired out to third parties. The license of use of this software is issued exclusively for the purposes laid down in the software documentation.

1.3 ENTRY INTO FORCE AND DURATION OF THE LICENSE

This license enters into force on the day of installation of the software, whereby the user accepts these conditions of use and liability. The license is open term and has no date of expiry. The licence and the limited rights of use by the user of the software will be invalidated in case of a breach of any of the points laid down in paragraphs "1. Copyright and Intellectual Property ownership rights" and "2. License".

1.4 WARRANTY CONDITIONS

SOCOMEC neither implicitly nor explicitly provides any warranty concerning the usability of the software. Despite the extensive use of resources to develop the software, no guarantees are provided concerning the absence of errors. SOCOMEC may provide the support needed to solve any errors present in the software. Such support is limited to the correction of programming errors and is not extended to the implementation of new functions that are not present in the version of the software used by the user.

Should the user find any manifest or hidden errors, they must be notified to SOCOMEC in writing.

1.5 SOFTWARE UPDATES

This licence does not grant the right to receive software updates, or new versions.

1.6 LIMITATIONS OF LIABILITY

SOCOMEK shall not be held liable, under any circumstances, for damage of any kind, including economic losses, directly or indirectly consequential to the use of, or inability to use the software.

1.7 SEVERABILITY

If any clause of this contract is found to be ineffective or become ineffective for any reason whatsoever, the remaining terms of the licence shall still apply. The unenforceable clause or ineffective provisions will be replaced by a clause, also with retroactive effect, that addresses subsequently identified requirements, within the scope of legal enforceability.

1.8 AMENDMENTS TO THE LICENCE

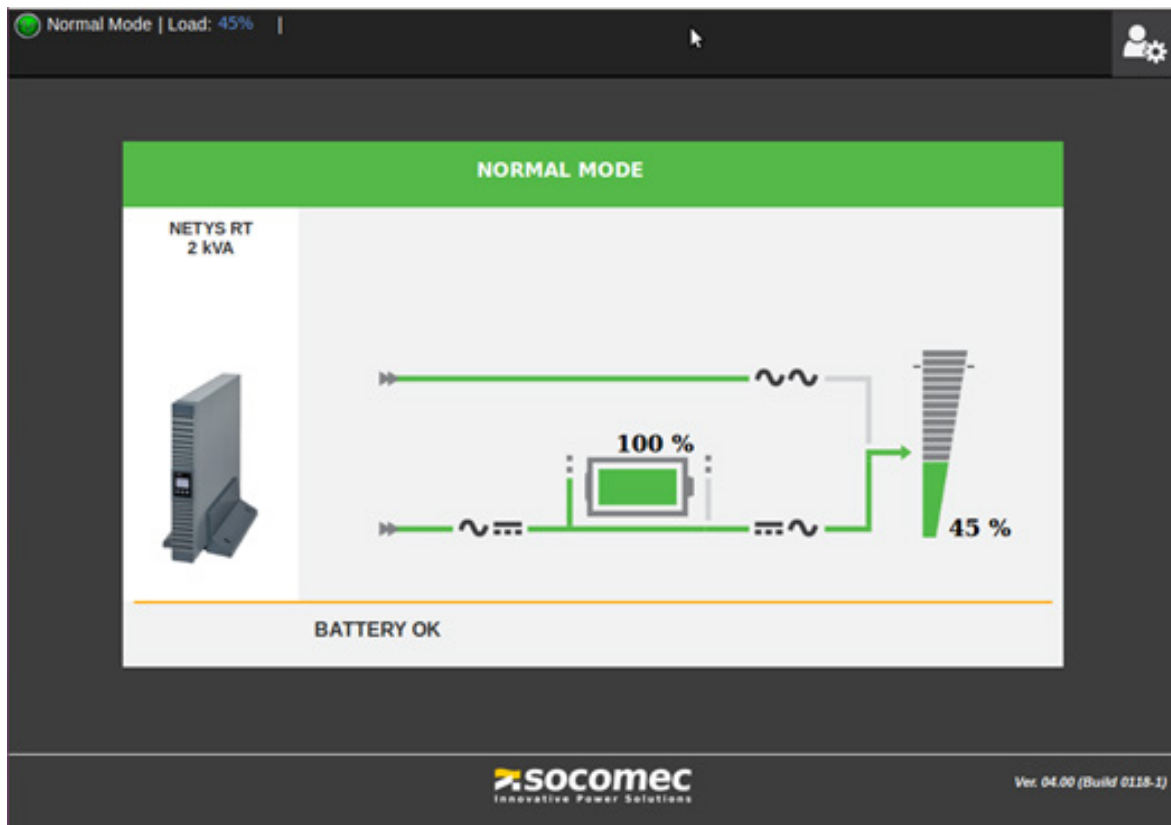
Any amendment to this licence must be made in writing.

1.9 APPLICABLE LAW

This contract is subject to French law.

The information contained herein, the software and documentation, are the exclusive property of SOCOMEK.

2. SUMMARY



2.1 UPS MONITORING

- Simple user interface
 - UPS status
 - Battery status and measurements
 - Load status and measurements
- Expert level access for:
 - UPS events history log
 - Measurements history log
 - Configuration
 - Email notification
 - Shutdown procedure
 - Miscellaneous (language, serial port, log filter)

2.2 ALERT NOTIFICATION VIA EMAIL

- Simple user interface
- Multiple recipients

2.3 AUTOMATIC SHUTDOWN PROCEDURE

- Event selection
- Batch and shutdown timing

2.4 UPS COMMUNICATION WITH THE PC OR MAC

- RS232
- USB
- Ethernet

3. LOCAL VIEW FOR LINUX

3.1 COMPATIBILITY

3.1.1 HARDWARE COMPATIBILITY

LocalView is compatible with 32 and 64 bit μ Processors architecture.

The connection with the UPS requires a serial port (real RS232 com port or via USB converter), or a USB port, or Ethernet connection.

3.1.2 LINUX DISTRIBUTION COMPATIBILITY

Please refer to Socomec web site for Linux distributions compatibility and update.

3.1.3 WEB BROWSER COMPATIBILITY

The LocalView user interface is provided via web server, included in the LocalView package. LocalView is compatible with:

- Mozilla
- Safari
- Chrome

3.2 INSTALLATION

3.2.1 USER ACCOUNT AND ADMIN RIGHTS

It is necessary to install the software with Administrator account or user account with Admin rights.

3.2.2 LOCALVIEW PACKAGE

Copy the LocalView package from CD or the SOCOMEC website to LINUX disk (i.e. the user /Documents standard directory). Extract gz.tar file via file manager or via Terminal.

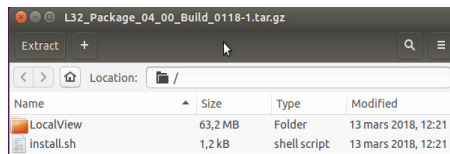
For x64 platform:

```
tar -zxvf L64_Package_xxx.tar.gz
```

For x86 platform

```
tar -zxvf L32_Package_xxx.tar.gz
```

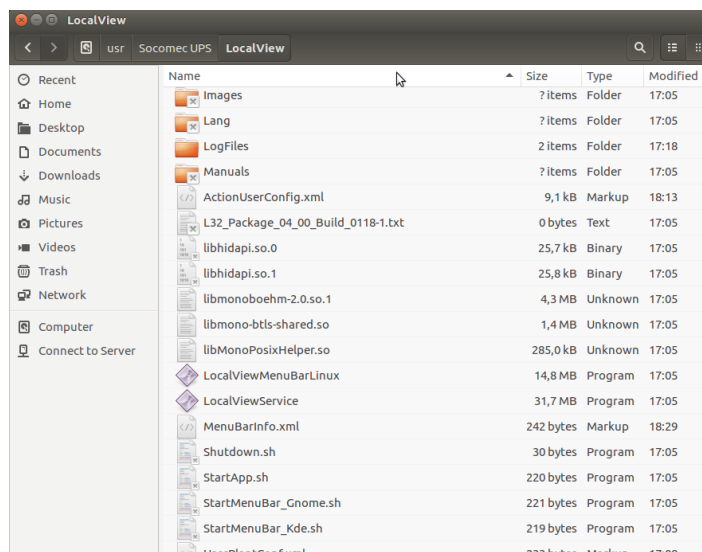
After unzipping, the setup and LocalView folders are present in the same directory.



./install.sh to install LocalView, then LocalView is installed in '/usr/Socomec UPS/LocalView' folder by default.



ATTENTION!
Please do not change the default installation directory.



3.3 COMMUNICATION CHANNEL

LocalView communicates via RS232 or USB. Ensure the port provided for LocalView is available.

If a USB/R232 converter is used, the device has to be installed beforehand (please refer to the manufacturer's web-site for the driver). The resource is /dev/ttyUSB0 in this case.

You can check the list of devices with the following shell command: `dmesg | grep tty`

3.4 RUNNING LOCAL VIEW

3.4.1 MANUALLY VIA TERMINAL

- Open a terminal session
- Select the installation folder : `cd '/usr/Socomec UPS/LocalView'`
- Run the application `./StartApp.sh`

At this stage all LocalView services will be running.

3.4.2 RUNNING LOCALVIEW AS A DAEMON

If LocalView is installed as a daemon all services will be running when LINUX is starting up. It is not necessary to open a session to run it.

UBUNTU / DEBIAN

Edit the following file using root rights: `/etc/rc.local`

Add this line before the exit 0 command: `sh '/usr/Socomec UPS/LocalView/StartApp.sh' &`

REDHAT

Edit the following file using root rights: `/etc/rc.d/rc.local`

Add this line before the exit 0 command: `sh '/usr/Socomec UPS/LocalView/StartApp.sh' &`

SUSE

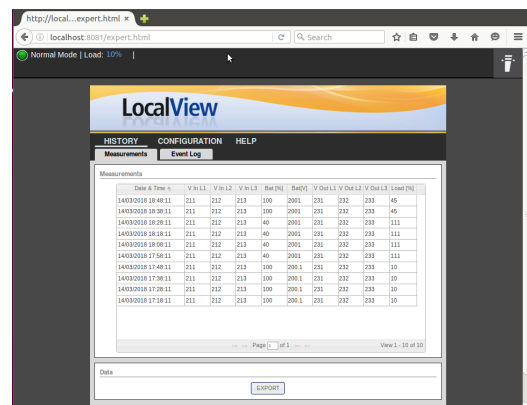
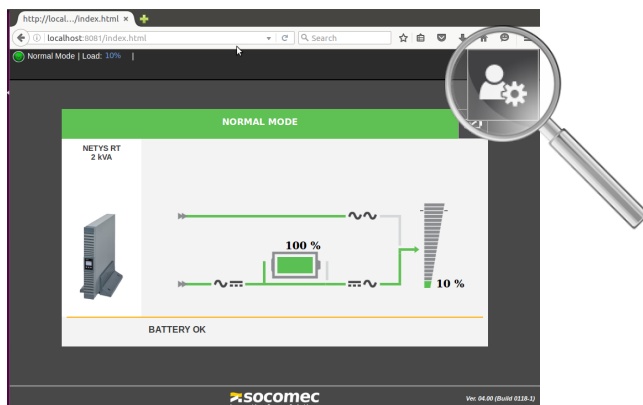
Edit the following file using root rights: `/etc/init.d/after.local`

Add this line before the exit 0 command: `sh '/usr/Socomec UPS/LocalView/StartApp.sh' &`

After saving the file it is necessary to restart LINUX to start LocalView as a daemon.

3.4.3 OPENING THE USER INTERFACE

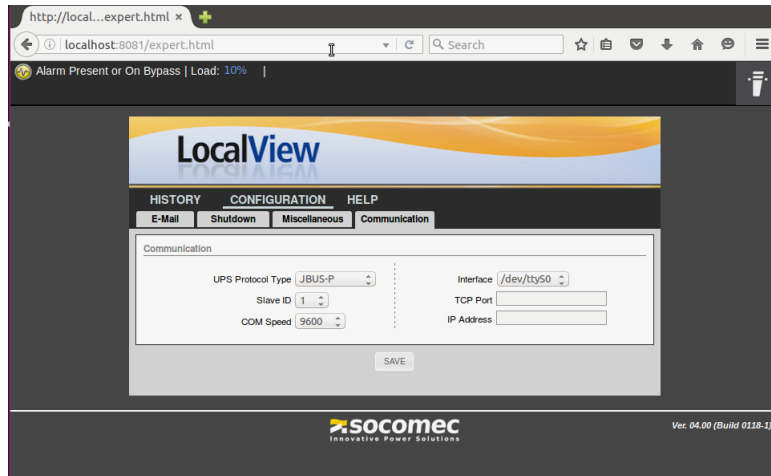
Start the web browser, and open the LocalView home page with this link: <http://localhost/8081/index.html> Port 8081 is set by default. It is possible to change the port on the LocalView Expert Miscellaneous page. Communication with the UPS is not open the first time.



Select  to switch to Expert page, and select  to switch to user interface.

3.4.4 UPS COMMUNICATION CONFIGURATION

In LocalView Expert application, select CONFIGURATION menu and Communication item



UPS protocol Type:

- PH: the interface is USB for this protocol
- JBUS-P: the interface is Serial port /dev/ttyS0
- VU-MAP: the interface is Serial port /dev/ttyS0 or ETH

Serial Interface:

- Serial port /dev/ttyS0 to select
- Slave ID = 1
- COM speed 9600 by default (2400 for ITYS range)

ETH Interface for ITYS-PRO

- TCP port to set: 1025
- IP address of the UPS IP connection (to check on local panel)

Save the settings to restart the daemon with new parameters.

3.5 NOTIFICATION UTILITY INSTALLATION

LocalView includes a notification application. This application is an external tool based on the Desktop Graphical Interface currently used by the system, such as GNOME or KDE.

Two specific tools can be used depending on the LINUX distribution and the application:

- GNOME/UNITY environment > '/usr/Socomec UPS/LocalView/StartMenuBar_Gnome.sh'
- KDE environment > '/usr/Socomec UPS/LocalView/StartMenuBar_KDE.sh'

Note:

To allow notification it is necessary to change rights of following files before installation:

```
sudo chmod 777 StartMenuBar*.sh
```

```
sudo chmod 666 Menu*.xml (metafile)
```

Run as normal user StartMenuBar_Gnome.sh' or ./StartMenuBar_KDE.sh &



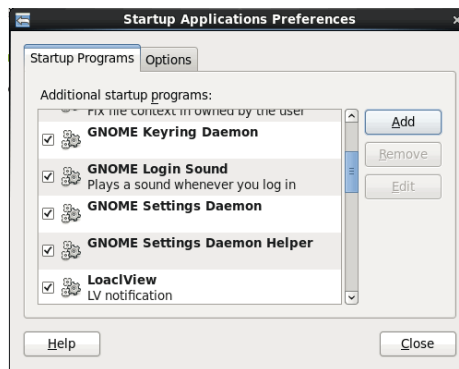
IMPORTANT PREREQUISITE!

The MenuBar application requires these system tools to be installed: GNOME/UNITY environment > notify-send

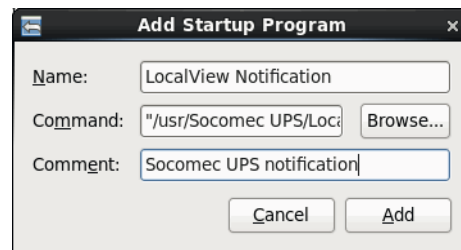
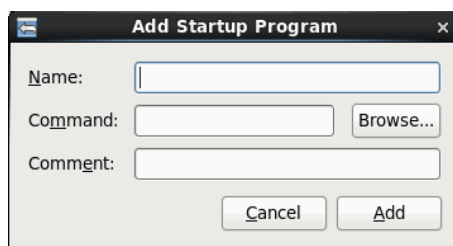
KDE environment > kdialog

Usually these tools are present by default on the system. If not they must be installed, which can be done using the standard software management present on the Linux System.

See the following steps for automatic start-up of the notification program



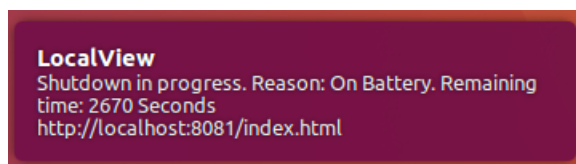
Click on Add and select the required application



3.5.1 NOTIFICATION

Notification is only displayed if a session is open.

This application is started when a new session is open and stopped when closed.



3.5.2 NOTIFICATION LIST

Status	Description
No communication with UPS	No communication with UPS
Shutdown procedure in progress	Shutdown procedure in progress
UPS Off or Imminent Stop	UPS Off or Imminent Stop UPS in Standby
Alarm Present or On Bypass	Alarm Present or On Bypass
NORMAL MODE / eco MODE	Normal Mode

3.5.3 LOCALVIEW UPDATE

LocalView makes it possible to access the SOCOMEC SOFTWARE website to download the latest release of LocalView if required.

Before installing a new release it is necessary to remove the previous installation by removing the LocalView folder.

It is possible to copy old .xml files (UserPlantConf.xml and ActionUserConfig.xml) and replace after installation to keep previous LocalView configurations.

4. LOCAL VIEW FOR COMPUTER WITH MAC OS

4.1 COMPATIBILITY

4.1.1 HARDWARE COMPATIBILITY

LocalView runs on the APPLE platform.

A serial port or USB port is required depending on the UPS model. With a serial connection the RS232/USB converter is mandatory.



Suggested converter: PROLIFIC TECHNOLOGY USB/RS232 Converter.

4.1.2 MAC OS COMPATIBILITY

Please refer to Socomec web site for MacOS versions compatibility and update.

4.1.3 WEB BROWSER COMPATIBILITY

The LocalView user interface is provided via web server, included in the LocalView package. LocalView is compatible with:

- Safari
- Chrome

4.2 INSTALLATION

4.2.1 ROSETTA

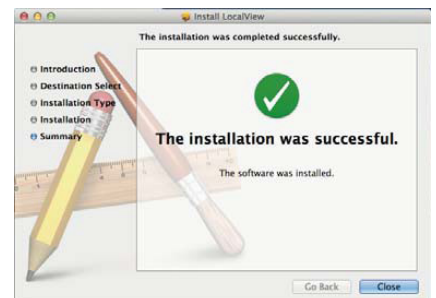
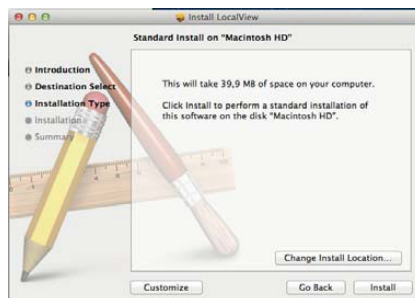
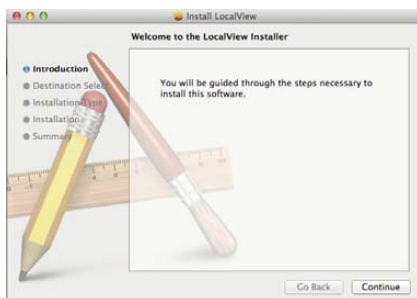
Local View needs this utility to run on M1 processor. If your Mac system request to install it, please confirm the installation.

4.2.2 USER ACCOUNT

It is necessary to install LocalView software with the administrator account.

4.2.3 LOCALVIEW PACKAGE

Copy the LocalView package (LocalView_Mac_xxx.mpkg from CD or SOCOMEC website to MAC disk
Double click on the file to install LocalView and follow the standard installation tools.



4.3 COMMUNICATION CHANNEL

LocalView communicates via RS232 or USB. Ensure the port provided for LocalView is available.

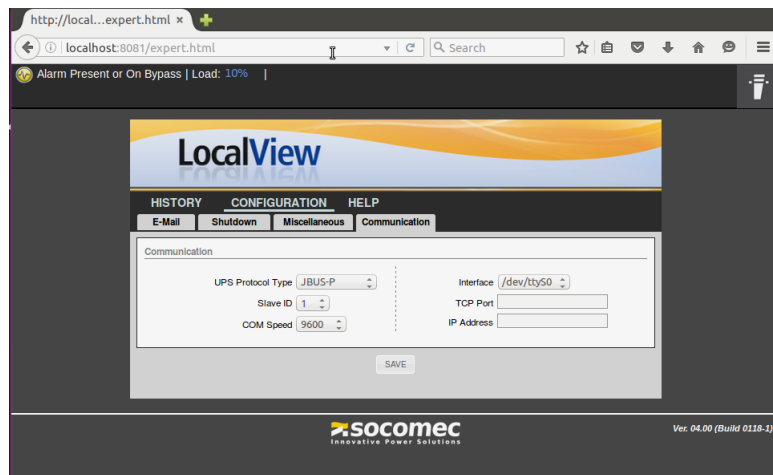
If a USB/R232 converter is used, the device has to be installed beforehand (please refer to the manufacturer's web-site for the driver). The resource is /dev/tty.usbserial in this case.

Checking the driver: Select about in MAC system, info menu and system report.

In the HW list device check on USB item if the device is present and running.

4.4.3 UPS COMMUNICATION CONFIGURATION

In LocalView Expert application, select CONFIGURATION menu and Communication item



UPS protocol Type:

- PH: the interface is USB for this protocol the interface is Serial port /dev/tty.USBserial
- JBUS-P: the interface is Serial port /dev/tty
- VU-MAP: the interface is Serial port /dev/tty or ETH

Serial Interface:

- Serial port /dev/tty to select
- Slave ID = 1
- COM speed 9600 by default (2400 for ITYS range)

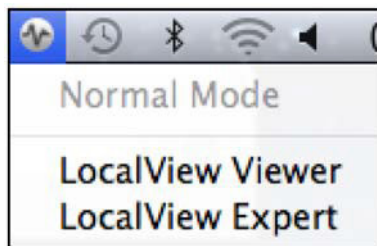
ETH Interface for ITYS-PRO

- TCP port to set: 1025
- IP address of the UPS IP connection (to check on local panel)

Save the settings to restart the service with new parameters.

4.5 STARTING APPLICATION ON A MAC

- Using the icon on MenuBar



- Using the APP on Application Folder



- Using the APP on LaunchPad



4.6 NOTIFICATION

LocalView includes a notification application.

On the MAC MenuBar a new icon is added. This icon gives access to LocalView Viewer and LocalView Expert pages, as described in the previous paragraph. This icon flashes during UPS event notification or the shutdown procedure.

Clicking opens the MenuBar.

The first line gives UPS status, and the second part accesses LocalView interfaces.

4.6.1 NOTIFICATION LIST

Status	Description
No communication with UPS	No communication with UPS
Shutdown procedure in progress	Shutdown procedure in progress
UPS Off or Imminent Stop	UPS Off or Imminent Stop UPS in Standby
Alarm Present or On Bypass	Alarm Present or On Bypass
NORMAL MODE / eco MODE	Normal Mode

4.6.2 LOCALVIEW UPDATE

LocalView makes it possible to access the SOCOMEC SOFTWARE website to download the latest release of LocalView if required.


Before installing a new release it is necessary to uninstall the previous version.

Uninstall procedure:

In “\Library\Application Support\Socomec UPS\LocalView\Scripts”

run: `sudo sh ./uninstall.sh`

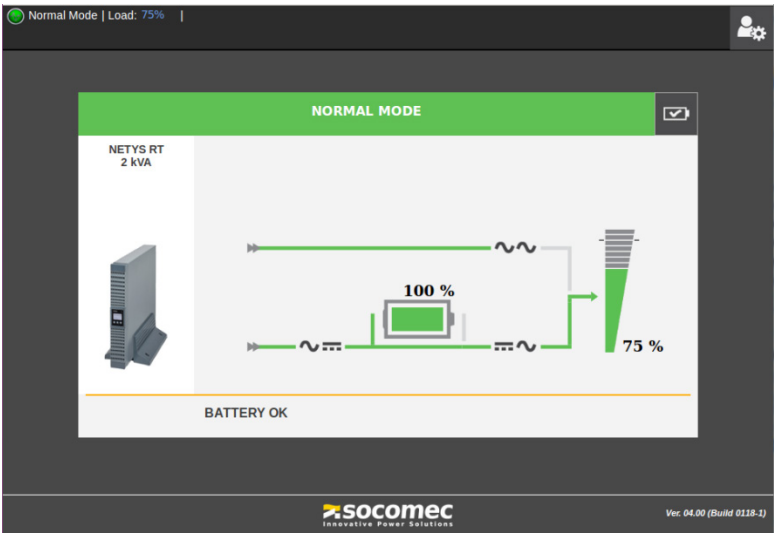
5. USER INTERFACE WEB PAGE



The following chapter is common to LINUX and MAC.
The user interface is identical for both platforms.

5.1 GENERAL OVERVIEW

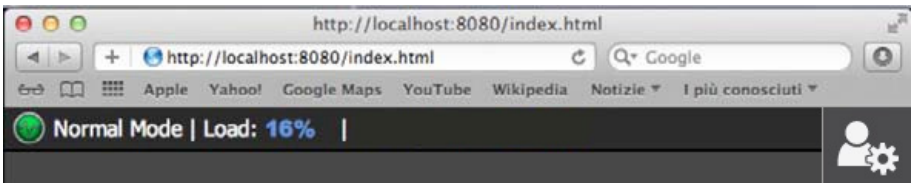
The top bar of the page gives UPS status, load rate and remaining backup time.
During the shutdown procedure these parameters are replaced with shutdown procedure status, including the remaining time before shutdown.









5.2 SERVICE AND UPS STATUS

5.2.1 UPS STATUS

When is running, an icon is present in the top area of the Viewer or Expert Icon colour defines the service and UPS status, for example:





Status	Icon	Balloon message
Service stopped		Service Stopped
No communication with UPS		No communication with UPS
Shutdown procedure in progress		Shutdown procedure in progress
IMMINENT STOP / UPS OFF		UPS Off or Imminent Stop
ON BYPASS /ALARM PRESENT		Alarm Present or On Bypass
NORMAL MODE / eco mode		Normal Mode

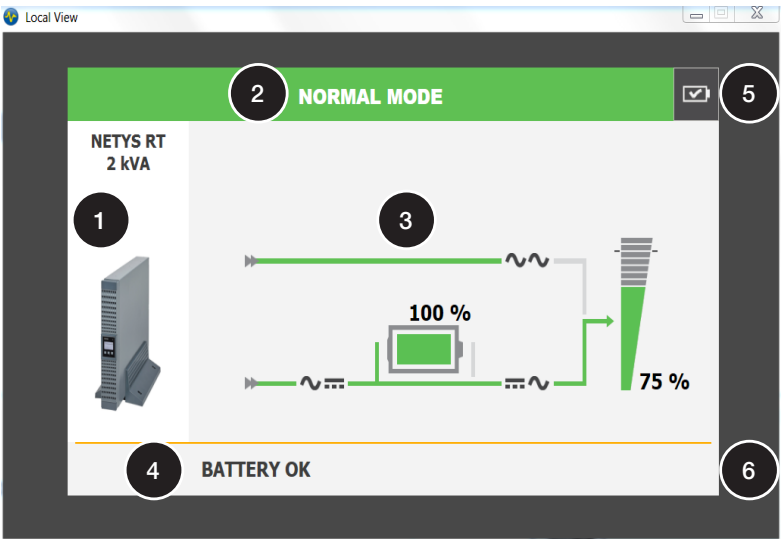
5.2.2 UPS PARAMETERS

Load rate and remaining backup time are displayed on the status bar. Values are automatically refreshed when updated. If the remaining backup time is not available from the UPS the label and value are disabled.

5.2.3 SWITCH TO LOCALVIEW VIEWER / EXPERT APPLICATIONS

Select  to switch to Expert page, and select  to switch to user interface.

5.3 USER INTERFACE



- 1 UPS REFERENCE
- 2 UPS STATUS
- 3 SYNOPTIC ANIMATION
- 4 STATUS AND ALARMS MESSAGE
- 5 BATTERY TEST CONTROLS
- 6 ALARM ACKNOWLEDGEMENT CONTROLS

5.4 UPS REFERENCE

Name and picture of the UPS connected to the PC.

LIST OF UPS SYSTEMS
NETYS PE
NETYS PL
NETYS PR
ITYS
OFYS RT
NETYS RT
ITYS – PRO
MASTERYS
MODULYS GP RM
MODULYS XS

Note: the UPS picture is given, as example and may differ from the actual UPS connected to the PC.

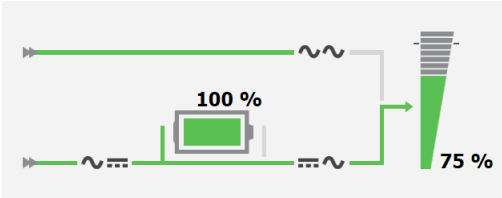
5.5 UPS STATUS

Status	Type of info	Reason
IMMINENT STOP	Alarm	The UPS output will be switched OFF due to a critical alarm ⁽¹⁾
ON BATTERY	Alarm	AC failure
eco mode	Status	PC powered by the mains, and Inverter automatically switched on when AC failed
ON BYPASS	Status	PC powered by mains ⁽¹⁾
NORMAL MODE	Status	PC protected by UPS ⁽¹⁾
STANDBY MODE	Status	PC not powered, and awaiting reactivation
OFF	Status	PC not supplied ⁽¹⁾

1. Not available for Netys PE and Netys PL

5.6 SYNOPTIC ANIMATION

The synoptic gives graphical status of the inputs supply, rectifier, battery, inverter, bypass and load.



Flow animation:

- In green: power present in normal condition.
- In yellow: power present in abnormal conditions (on battery or on bypass).
- In grey: power not present.

Rectifier: ~ |||

- Yellow if a preventive alarm is present.
- Red if a critical alarm is present.



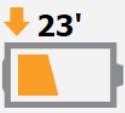
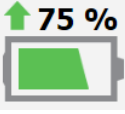
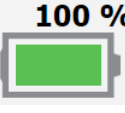


Inverter: ||| ~

- Yellow if a preventive alarm is present.
- Red if a critical alarm is present.

Bypass: ~ ~




- Yellow if a preventive alarm is present.
- Red if a critical alarm is present.

Battery animation:

Symbol	Status	Value
	Battery not connected ⁽¹⁾	
	BATTERY LOW BATTERY DISCHARGED ⁽¹⁾	Bellow 16% the tank is red
	BATTERY DISCHARGING	Bellow 40 % the tank is yellow The remaining backup time is displayed in place of battery capacity
	BATTERY CHARGING ⁽¹⁾	Above 41 % the tank is green
	BATTERY CHARGED ⁽¹⁾	The level represents the % capacity.
	BATTERY ALARM	The UPS has determined a faulty battery
	BATTERY TEST FAILED	Result after battery test

1. Not available for Netys PE and Netys PL.

LOAD ANIMATION

Symbol	Status	Value
Not present	If no load on the UPS output	Output load rate = 0 %
	Load is supply.	Up to 90 %
	Load is supply in overload	Up to 110 %
	Load is supply in critical overload	Over 110 %

5.7 STATUS AND ALARMS MESSAGE

BATTERY STATUS
BATTERY OK ⁽¹⁾
BATTERY ALARM
BATTERY TEST ALARM ⁽¹⁾
BATTERY TEST IN PROGRESS

1. Not available for Netys PE and Netys PL.


LIST OF ALARMS
END BACKUP TIME
BATTERY ALARM
GENERAL ALARM
OVER TEMPERATURE ⁽¹⁾
OVERLOAD ⁽¹⁾

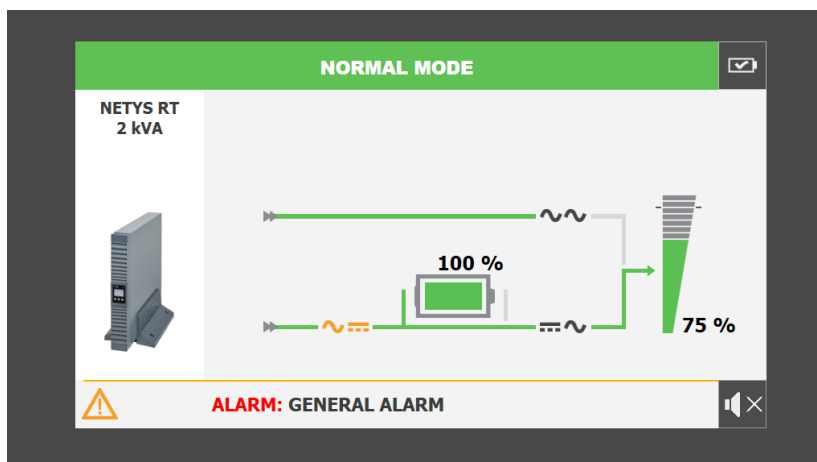
1. Not available for Netys PE and Netys PL.

5.8 BATTERY TEST CONTROL

LocalView can test the battery. If the button isn't available battery testing is not possible or has been disabled by the UPS. Battery test status and results are displayed on the ALARM bar.

5.9 ACK BUTTON

When a new alarm occurs the buzzer sounds on the UPS. Selecting  sends a command to stop the buzzer. Example of the User Interface with a general UPS alarm:

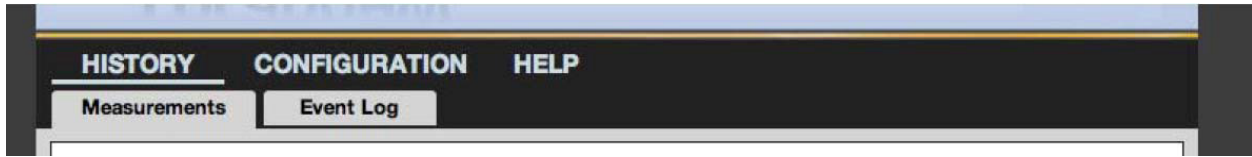


The presence of  signals the presence of alarms

6. EXPERT

6.1 MENU NAVIGATION

HISTORY



- Accesses the measurements history
- Accesses the event log (Status and Alarms)

CONFIGURATION



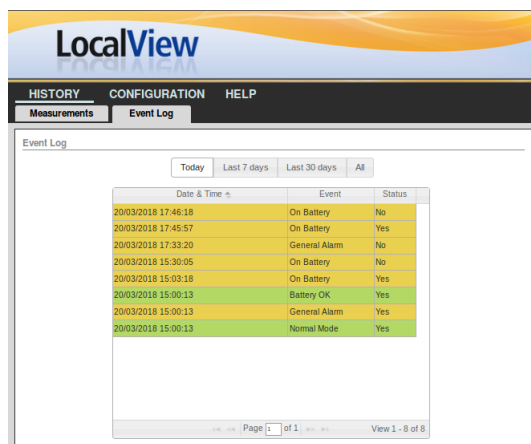
- SMTP and Email configuration
- PC Shutdown configuration
- Language selection
- Log filter and sample settings
- UPS communication port settings
- Automatic update settings

HELP

- Accesses the user manual (this document)

6.2 EVENT LOG

LocalView creates a history log with the most important statuses and alarms. Each new event is dated and stored in a file.



6.2.1 LIST OF EVENTS STORED

STATUS	TYPE
Imminent Stop	ALARM
On Battery	ALARM
End Backup Time	ALARM
Battery Alarm	ALARM
General Alarm	ALARM
Over Temperature	ALARM
Overload	ALARM
Battery Test Alarm	ALARM
Battery Test In Progress	STATUS
Battery OK	STATUS
eco mode	STATUS
Bypass Mode	STATUS
Normal Mode	STATUS
Standby Mode	STATUS
Off	STATUS

Note: not all events are available for NETYS PE and NETYS PL.

6.2.2 EVENTS FILTERING

It is possible to select different event periods, such as : Today / Last 7 days / Last 30 days / All

Last 7 days shows events recorded for the last seven days.

All disables the current filter.

6.2.3 EXPORT

This option saves the entire event log in CSV format to the local disk. It is possible to open this file in Excel for diagnostic purposes if required. It can also be used as backup. The recommended default file name is: EventsLog_ddMMyy_HHmm.csv, where dd = day; MM = month; yy = year, HH = hour (24h format); mm = minutes.

6.3 MEASUREMENTS HISTORY

6.3.1 LIST OF MEASUREMENTS STORED:

Measurements	Format	Units
UPS Load Rate	0 – 150	%
Output voltage	L1 for phase 1 L2 and L3 for 3 UPS phases	Volts (V)
Battery capacity	0 – 100	%
Battery voltage	number	Volts (V)
Input voltage	L1 for phase 1 L2 and L3 for 3 UPS phases	Volts (V)

The number of samples depends on logging details (set in configuration page) Default setting: Records by WEEK, 10 minute sampling.

The oldest record is replaced with the newest (FIFO). Maximum no. of records allowed: ~ 1500.

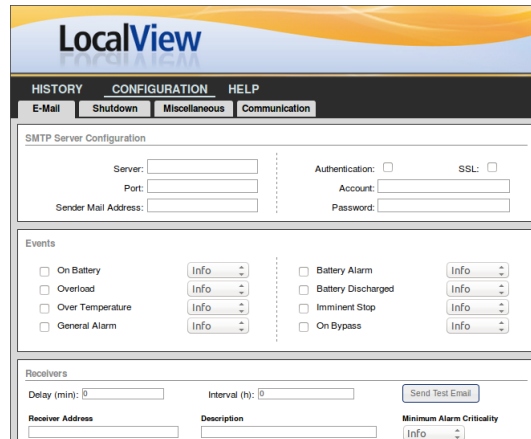
6.3.2 EXPORT

This option saves the entire measurements history in CSV format to the local disk. It is possible to open this file in Excel for diagnostic purposes if required. It can also be used as backup.

The recommended default file name is: MeasLog_ddMMyy_HHmm.csv, where dd = day; MM = month; yy = year, HH = hour (24h format); mm = minutes.

6.4 EMAIL CONFIGURATION

LocalView can send notification according to different events. It is possible to select events, level of criticality and up to 8 recipients. This process is managed by the service. It is not necessary to have the User Interface open.



The screenshot shows the 'LocalView' web interface with the 'E-Mail' tab selected under the 'CONFIGURATION' menu. The interface is divided into three main sections: 'SMTP Server Configuration', 'Events', and 'Receivers'. The 'SMTP Server Configuration' section includes fields for 'Server', 'Port', 'Sender Mail Address', 'Authentication' (checkbox), 'SSL' (checkbox), 'Account', and 'Password'. The 'Events' section lists various events with checkboxes and 'Info' buttons: 'On Battery', 'Overload', 'Over Temperature', 'General Alarm', 'Battery Alarm', 'Battery Discharged', 'Imminent Stop', and 'On Bypass'. The 'Receivers' section includes fields for 'Delay (min)', 'Interval (h)', 'Receiver Address', 'Description', and 'Minimum Alarm Criticality', along with a 'Send Test Email' button.

6.4.1 SMTP CONFIG

Defines mail server network configuration

- In the case of a company mail server
- In the case of external providers' mail server
- Sender address
- Account configuration
- TLS/SSL enabled or disabled

6.4.2 EVENTS

Click inside the box to enable the event that will send an email.

6.4.3 RECEIVER

The recipient address format is: name@domain

The description field is only for information, it is not included in the email body.

Level of criticality:

Info = All enabled events

Warning = Warning + Critical events

Critical = only Critical events

6.4.4 SEND A TEST EMAIL

Sends a test email to check the mail server configuration (SMTP).

6.4.5 SAVING OR CANCELLING THE SETTINGS

 stores the e-mail settings

It is necessary to save the settings to make them active.

6.4.6 ALARM CRITICALITY MANAGEMENT

The different levels are:

- Info
- Warning
- Critical

The recipient will only receive an email event from the minimum level for example:

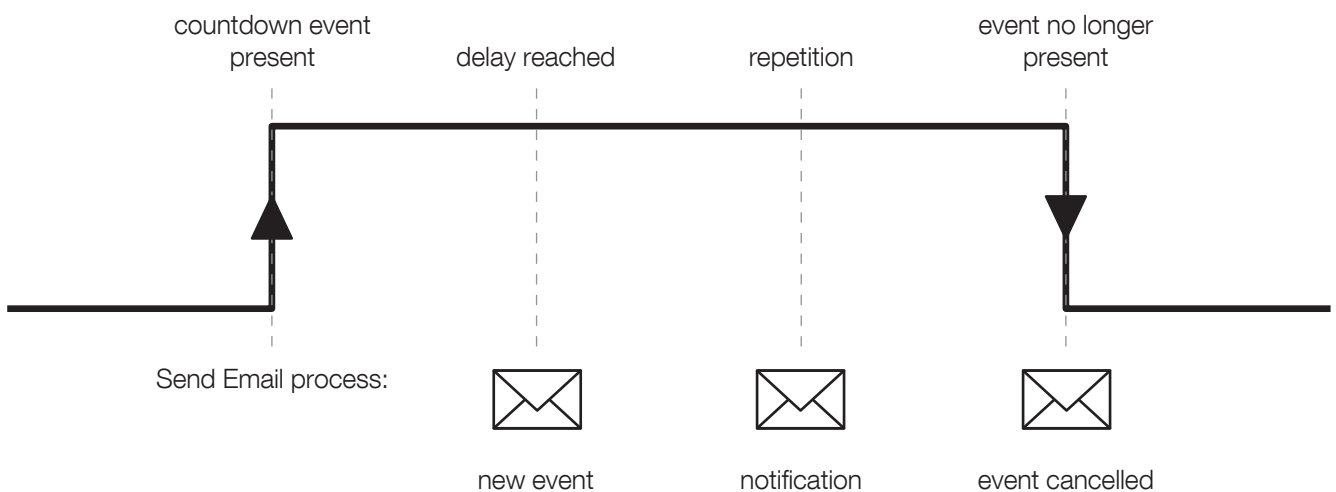
- Critical = Only Critical level
- Warning = Critical + Warning levels
- Info = Info + Warning + Critical levels

6.4.7 DELAY MANAGEMENT

Delays and repetitions are set to 0 by default. If events occur emails are sent immediately without repetitions.

LocalView sends notification after a delay, which is set in hours. If the event is still present email notification is sent at the end of the period.

GENERAL CASE:



6.4.8 EMAIL FORMAT

eMail subject:

- UPS New Events.
- UPS Events Cancelled.
- UPS Events Notification.

Email message:

- New Events.
- Events Cancelled.
- Events Active.

6.5 SHUTDOWN CONFIGURATION

LocalView can shut the PC down. It is possible to select events, delays and the system shutdown command. This process is managed by the service. It is not necessary to have the User Interface open.

If a script or batch file is present, it should be executed before shutdown. It must be created before setting the shutdown parameters.

LocalView

HISTORY

CONFIGURATION

HELP

E-Mail

Shutdown

Miscellaneous

Communication

Shutdown Configuration

First Warning (s): 0Shutdown Delay (s): 0

☐ First Delay Script:

☐ Shutdown Command Script: /usr/socomec UPS/LocalView/Shutdown.sh

Shutdown Events

EnabledEventFirst Delay (s)

☐ On Battery0

EnabledEventFirst Delay (s)

☐ Battery Low0

☐ Overload0

☐ Imminent Stop0

☐ Over Temperature0

☐ On Bypass0

UPS Shutoff Configuration

UPS Shutoff: UPS Shutdown Delay (s): 90

Test Commands

Start Shutdown Test

Cancel Shutdown Test

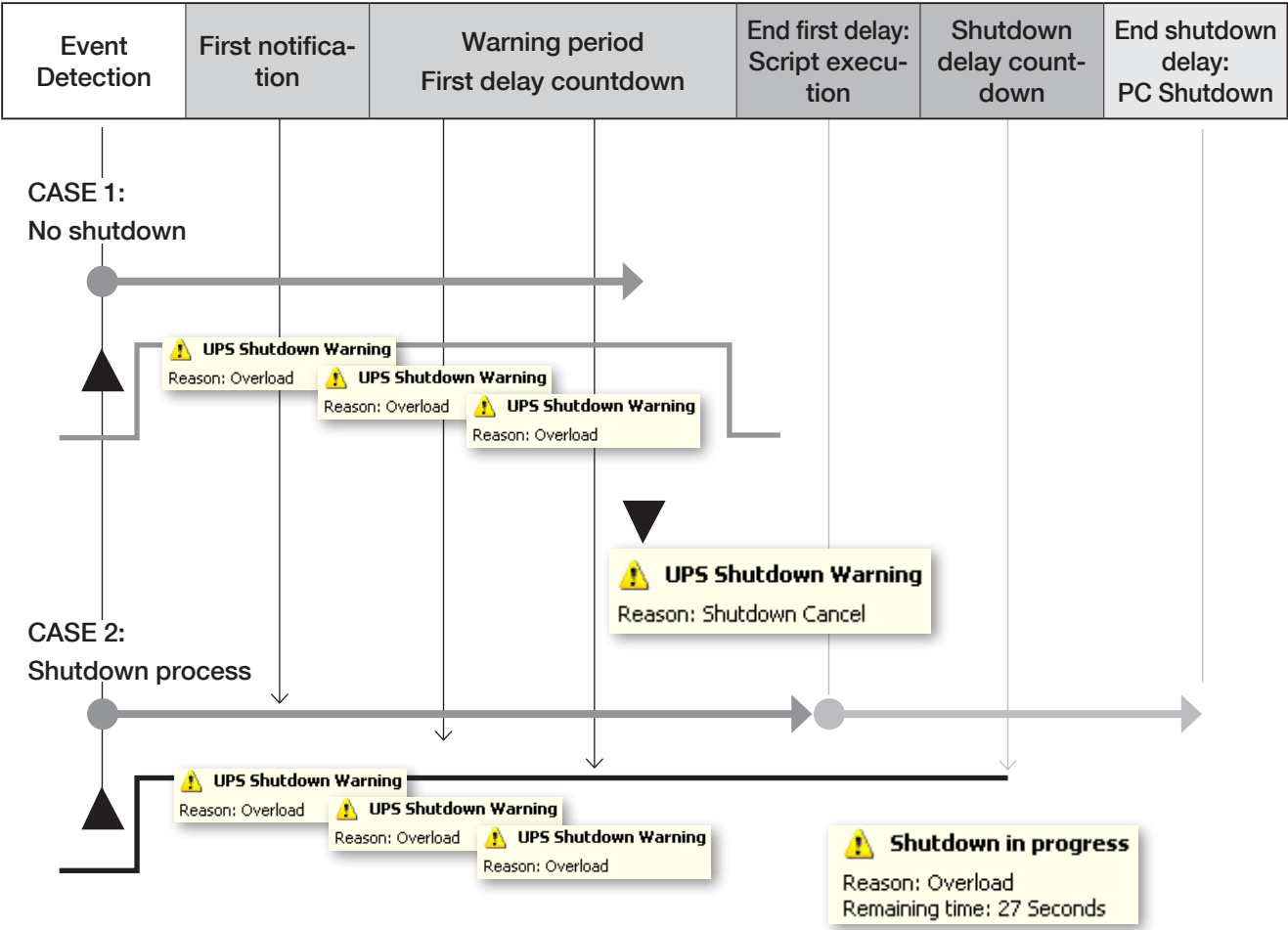
SAVE

6.5.1 SHUTDOWN EVENTS SELECTION

This table illustrates the PC shutdown and timing procedure.

Events	First warning delay	Warning interval	Delay before executing the script	Delay before OS shutdown
On battery / AC failure	Value in seconds. It should be ≤ First Delay (s)	Value in seconds. It should be ≤ First Delay (s)	First delay	Shutdown delay
Battery discharged			0 = Immediate Range from 1' to 60'	
Over temperature				
Overload				
On bypass				
Imminent stop				

6.5.2 SHUTDOWN TIMING



6.5.3 SCRIPT SETTINGS

☒ First Delay Script:

Click on the box to activate this function.
Select the script/batch file to be executed via the file explorer.

6.5.4 SHUTDOWN COMMAND

☒ Shutdown Command Script:

Click on the box to enable the shutdown.

6.5.5 UPS SHUTOFF

LocalView sends a delayed UPS shutoff command when the PC starts to shut down, and only in the event of a battery alarm. The UPS shuts off when the countdown is completed. This function isn't available for all UPSs (Refer to your UPS manual).

Note: Netys PE and Netys PL only manage minutes for shutdown. Consider the following table for seconds to minutes conversion.

Shutoff delays (s) range	Minutes
$0 \leq \text{shutoff delay} < 90$	1
$90 \leq \text{shutoff delay} < 150$	2
$150 \leq \text{shutoff delay} < 210$	3
$210 \leq \text{shutoff delay} < 270$	4
$270 \leq \text{shutoff delay} < 330$	5
$330 \leq \text{shutoff delay} < 390$	6
$390 \leq \text{shutoff delay} < 450$	7
$450 \leq \text{shutoff delay} < 510$	8
$\text{shutoff delay} > 510$	9

6.5.6 TEST SHUTDOWN PROCEDURE

LocalView checks the procedure and timing via AC Failure/ On battery status simulation. It is possible to cancel this procedure during the shutdown countdown.

The UPS shutoff will not be executed in this case for safety reasons.

6.5.7 USER NOTIFICATION

Balloon indicates the status and remaining backup time during the shutdown countdown:

- UPS Shutdown Warning
- Shutdown in progress
- UPS Shutdown Cancelled
- Shutdown Cancelled Reason:
- Remaining time: (in minutes)

6.5.8 SAVING OF CANCEL THE SETTINGS

 stores the shutdown settings

It is necessary to save the settings to make them active.

6.6 USER CONFIGURATION – MISCELLANEOUS

6.6.1 LANGUAGE

The User Interface goes to English by default. It is possible to change the language by selecting corresponding choice.

6.6.2 FILTER

The filter defines the period and sample time for measurements history.

Detailed record table:

Sample in minutes	DAY	WEEK	MONTH
1	1440		
2	720		
5	288		
10	144	1008	
20	72	504	
30	48	336	1488
60	24	168	744

6.6.3 HTTP PORT

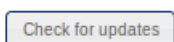
It is possible to change the HTTP port of the application. If changed, it is necessary to reload the webpage at the new port.

I.E.: httpport = 8080

New link = <http://localhost:8080/index.html>

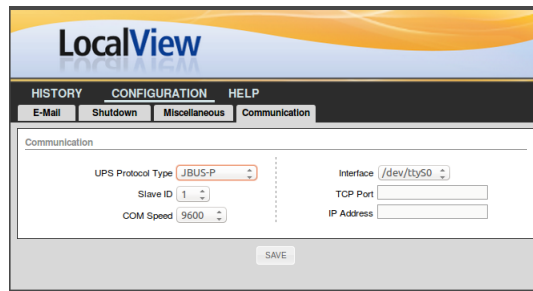
6.6.4 UPDATE

Press the Check for updates button to check for new updates. If present a link-message will notify you of the presence of new packages. Click on it to access the Socomec software download page.



6.6.5 COMMUNICATION PORT

In the case of a UPS port connection change on your PC, it is possible to change the communication settings. Use the Auto-discovery procedure for automatic settings, or manually select the right communication port and settings.



The screenshot shows the 'LocalView' software interface. At the top, there's a header with 'LocalView' and a navigation bar with 'HISTORY', 'CONFIGURATION', and 'HELP'. Under 'CONFIGURATION', there are sub-tabs: 'E-Mail', 'Shutdown', 'Miscellaneous', and 'Communication'. The 'Communication' tab is active. The main area is titled 'Communication' and contains several settings: 'UPS Protocol Type' is a dropdown menu set to 'JBUS-P'; 'Slave ID' is a numeric input set to '1'; 'COM Speed' is a dropdown menu set to '9600'; 'Interface' is a dropdown menu set to '/dev/tty50'; 'TCP Port' is a numeric input field; and 'IP Address' is a text input field. A 'SAVE' button is located at the bottom center of the form.

UPS protocol Type:

- PH: the interface is USB for this protocol
- JBUS-P: the interface is Serial port /dev/tty
- VU-MAP: the interface is Serial port /dev/tty or ETH


Serial Interface:

- Serial port /dev/tty to select
- Slave ID = 1
- COM speed 9600 by default (2400 for ITYS range)

ETH Interface

- TCP port to set: 1025
- IP address of the UPS IP connection (to check on local panel)

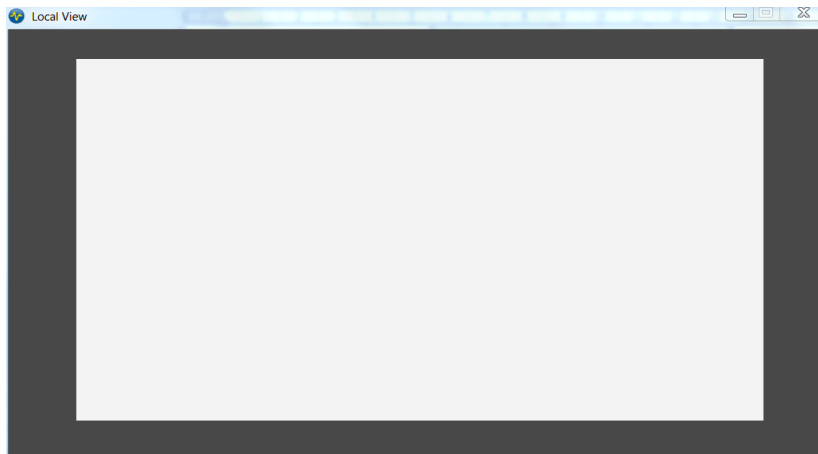
6.6.6 SAVING OF CANCEL THE SETTINGS

 stores the settings

It is necessary to save the settings to make them active.

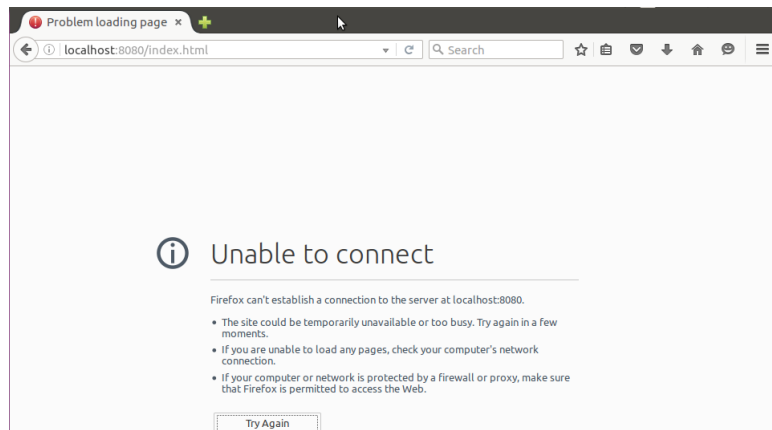
7. TROUBLESHOOTING

EMPTY USER INTERFACE



- No communication with UPS

PAGE ERROR



- Service not started

THE LOCALVIEW ICON IS BLUE

No communication with UPS. Check the cable, communication setting and UPS connection.

THERE IS NO BUTTON

Battery testing is not available or has been disabled by the UPS

WHEN I CLICK ON THE NOTHING HAPPENS

The battery test has been cancelled or suspended by the UPS

WHEN I CLICK ON THE BUZZER STILL SOUNDS ON THE UPS

It is possible that a new alarm is occurring at the same time. The buzzer must be stopped directly on the UPS.

THERE IS NO BUTTON

The command has been sent or the alarm is no longer present

I HAVEN'T RECEIVED AN EMAIL

Check the SMTP configuration.

Test the send email function

Check that events have been enabled

Check SSL/TLS authentication

THE SCRIPT/BATCH FILE HAS NOT BEEN EXECUTED

Check if the command file is already present on the disk in the correct folder. Manually test this script file.

Test this file with the shutdown test procedure function.

SHUTDOWN HASN'T BEEN COMPLETED

Check if the shutdown command is present in the configuration page. Manually check if the command has been executed (command script shell) Check if the shutdown command option is correct

I CANNOT START THE SERVICE

Maybe you don't have administrator rights.

If the service isn't present on the service list, remove and install LocalView again.

THE SERVICE DOESN'T START AUTOMATICALLY

Check your service/daemon policy. The service should be set as automatic. Try to start it manually.

I CANNOT OPEN THE USER INTERFACE

The service/daemon isn't running.

I CANNOT OPEN THE EXPERT WINDOW OR I CANNOT ACCESS THE SUBMENU

The service/daemon isn't running.

I CANNOT CHANGE THE LANGUAGE

Not all languages are available. Select the UK version. If nothing changes, close LocalView and run it again.

THE LOG FILE IS EMPTY

Maybe nothing has happened today. Select the Last 7 days or All filter option if events have been stored.

THE MEASUREMENTS HISTORY IS EMPTY

Check the record sample via the configuration page and check communication with the UPS. Click on Export if data is stored in the file.

Close LocalView and open it again.

MY UPS IS NOT RECOGNIZED AUTOMATICALLY

Set the protocol and interface according your UPS configuration

UPS RANGE	PROTOCOL	INTERFACE
NETYS PE	PH	USB
NETYS PL	PH	USB
NETYS PR MT	PH	USB
NETYS PR RT	JBUSP	/dev/tty
NETYS 1U	JBUSP	/dev/tty
NETYS RT 1.1 / 3.3 kVA	JBUSP	/dev/tty
NETYS RT 5 - 11 kVA	JBUSP	/dev/tty
ITYS 1 – 3 kVA	JBUSP (2400 bd)	/dev/tty
ITYS 6 – 10 kVA	JBUSP (2400 bd)	/dev/tty
ITYS PRO	VU-MAP	/dev/tty or ETH
MODULYS	JBUSP	/dev/tty
MODULYS GP2.0	VU-MAP	ETH
MODULYS RM	VU-MAP	ETH
MASTERYS BC	JBUSP	/dev/tty
OFYS RT 6 - 10kVA	PH	/dev/tty
OFYS RT 1 - 3kVA	PH	USB
ITYS3	JBUSP	/dev/tty
NETYS3 RT	JBUSP	/dev/tty
MODULYS XS	VU-MAP	ETH
MASTERYS COMPACT	VU-MAP	/dev/tty or ETH

/dev/tty PORT:

In case of using RS/USB converter, report the port number given by the driver during its installation.

NETYS3, OFYS RT 6KVA, ITYS3 AND USB:

This USB connection of is not compatible with Linux or MacOS, using RS232 an external RS/USB converter is necessary.

Socomec: our innovations supporting your energy performance

1 independent manufacturer

3,200 employees
worldwide

10 % of sales revenue
dedicated to R&D

400 experts
dedicated to service provision

Your power management expert



POWER
SWITCHING



POWER
MONITORING



POWER
CONVERSION



EXPERT
SERVICES

The specialist for critical applications

- Control, command of LV facilities
- Safety of persons and assets
- Measurement of electrical parameters
- Energy management
- Energy quality
- Energy availability
- Energy storage
- Prevention and repairs
- Measurement and analysis
- Optimisation
- Consultancy, commissioning and training

A worldwide presence

8 production sites

- France (x3)
- Italy
- Tunisia
- India
- China (x2)

27 subsidiaries

- Australia • Belgium • China • France
- Germany • India • Italy • Netherlands
- Poland • Romania • Singapore
- Slovenia • Spain • Switzerland • Thailand
- Tunisia • Turkey • UK • USA

80 countries

where our brand is distributed

HEAD OFFICE

SOCOMEK GROUP

SAS SOCOMEC capital 10 633 100 €
R.C.S. Strasbourg B 548 500 149
B.P. 60010 - 1, rue de Westhouse
F-67235 Benfeld Cedex
Tel. +33 3 88 57 41 41 - Fax +33 3 88 57 78 78
info.scp.isd@socomec.com

YOUR DISTRIBUTOR / PARTNER



IOMLOCVWXX01-EN 03 03.2022

www.socomec.com

